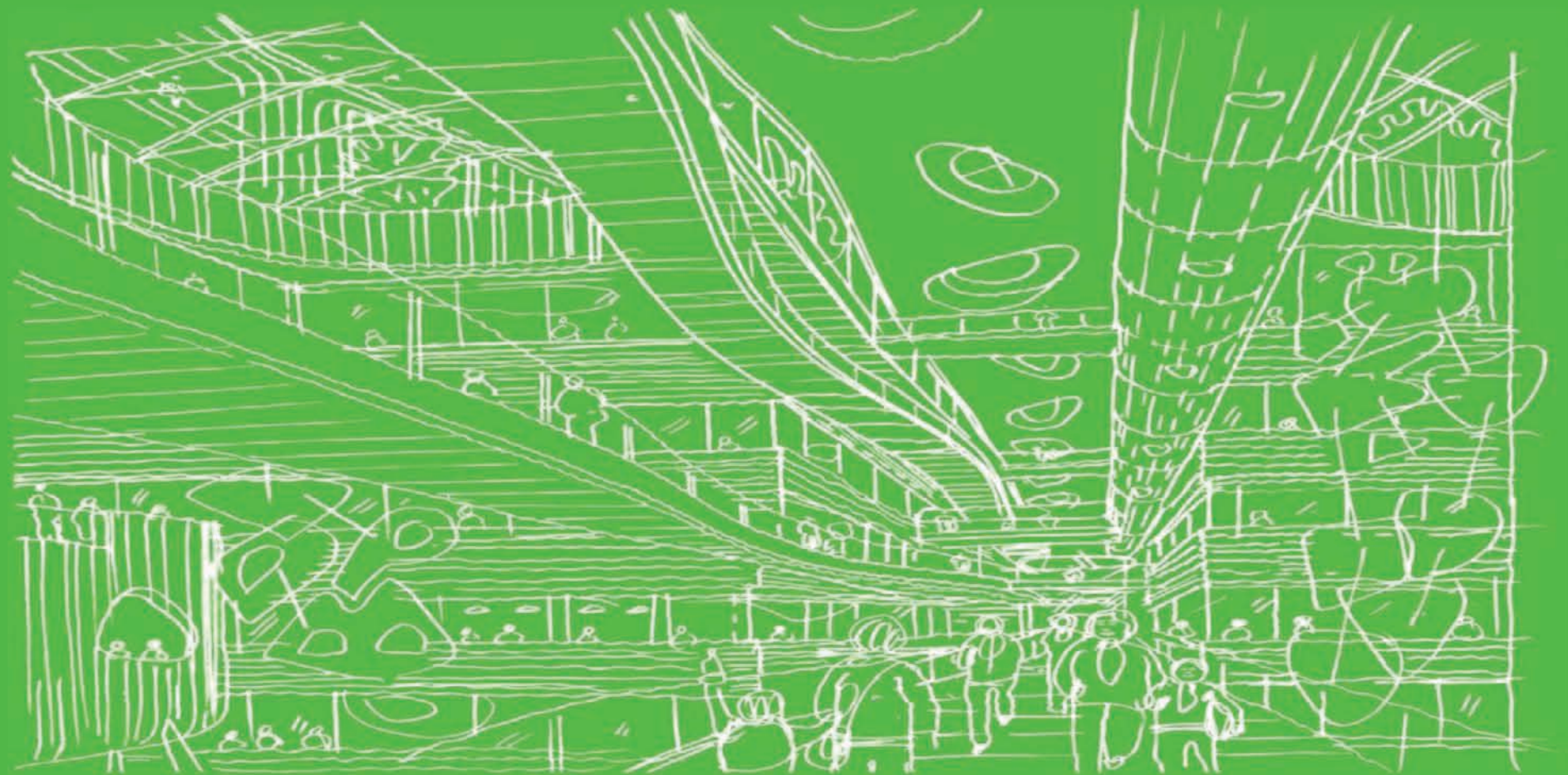


National Paediatric Hospital Project

Planning Application

Appendix 14.1: Photomontages



August 2015

Project Number:	6110	Document Number:	RP02	Revision:	Planning
Project Name:	NATIONAL PAEDIATRIC HOSPITAL PROJECT	Document Title:	PHOTOMONTAGES	Date:	August 2015

**New children’s hospital, associated Family Accommodation Unit
and Children’s Research and Innovation Centre
at St James’s Hospital**

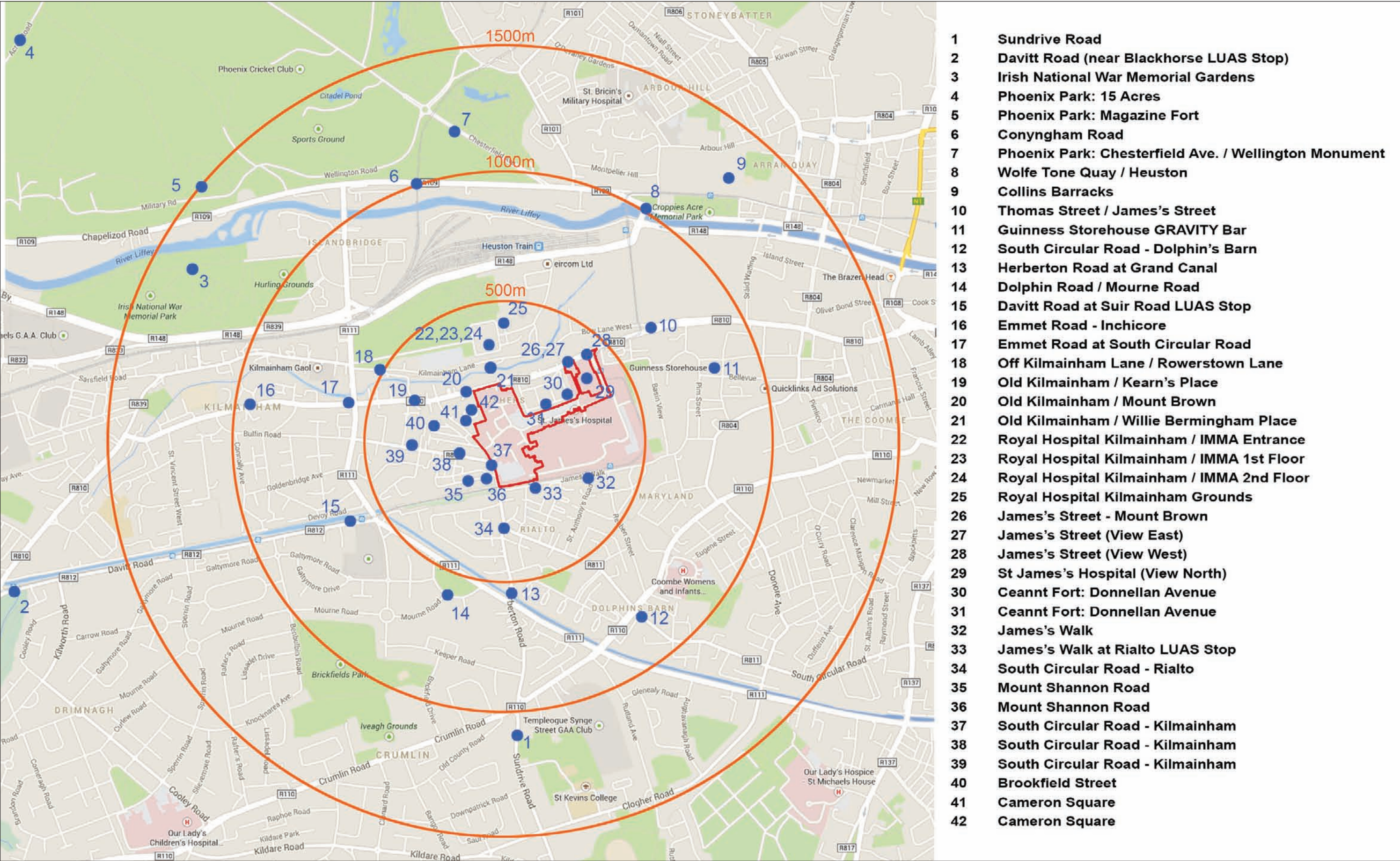


Figure: 0.1

View Location Map

Project Number:	6110	Document Number:	RP02	Revision:	Planning
Project Name:	NATIONAL PAEDIATRIC HOSPITAL PROJECT	Document Title:	PHOTOMONTAGES	Date:	August 2015



< 73.7° / 24mm	< 65.5° / 28mm	< 54.4° / 35mm	< 39.6° / 50mm	< 28.8° / 70mm	ANGLE OF VISION / LENS FOCAL LENGTH	70mm / 28.8° >	50mm / 39.6° >	35mm / 54.4° >	28mm / 65.5° >	24mm / 73.7° >
----------------	----------------	----------------	----------------	----------------	-------------------------------------	----------------	----------------	----------------	----------------	----------------

Figure: 1.1

View 01 from Sundrive Road
As Existing

BSM

Brady Shipman
Martin.
Est. 1968
Built.
Environment.

Project Number:	6110	Document Number:	RP02	Revision:	Planning
Project Name:	NATIONAL PAEDIATRIC HOSPITAL PROJECT	Document Title:	PHOTOMONTAGES	Date:	August 2015



< 73.7° / 24mm	< 65.5° / 28mm	< 54.4° / 35mm	< 39.6° / 50mm	< 28.8° / 70mm	ANGLE OF VISION / LENS FOCAL LENGTH	70mm / 28.8° >	50mm / 39.6° >	35mm / 54.4° >	28mm / 65.5° >	24mm / 73.7° >
----------------	----------------	----------------	----------------	----------------	-------------------------------------	----------------	----------------	----------------	----------------	----------------

Figure: 1.2

View 01 from Sundrive Road

As Previously Permitted. Planning reference: Dublin City Council 2751/09, An Bord Pleanala PL 29S.236070

BSM

Est. 1968

Brady Shipman
Martin.

Built.
Environment.

Project Number:	6110	Document Number:	RP02	Revision:	Planning
Project Name:	NATIONAL PAEDIATRIC HOSPITAL PROJECT	Document Title:	PHOTOMONTAGES	Date:	August 2015



< 73.7° / 24mm	< 65.5° / 28mm	< 54.4° / 35mm	< 39.6° / 50mm	< 28.8° / 70mm	ANGLE OF VISION / LENS FOCAL LENGTH	70mm / 28.8° >	50mm / 39.6° >	35mm / 54.4° >	28mm / 65.5° >	24mm / 73.7° >
----------------	----------------	----------------	----------------	----------------	-------------------------------------	----------------	----------------	----------------	----------------	----------------

Figure: 1.3

View 01 from Sundrive Road
As Proposed

BSM
Est. 1968

**Brady Shipman
Martin.**
Built.
Environment.

Project Number:	6110	Document Number:	RP02	Revision:	Planning
Project Name:	NATIONAL PAEDIATRIC HOSPITAL PROJECT	Document Title:	PHOTOMONTAGES	Date:	August 2015



< 73.7° / 24mm	< 65.5° / 28mm	< 54.4° / 35mm	< 39.6° / 50mm	< 28.8° / 70mm	ANGLE OF VISION / LENS FOCAL LENGTH	70mm / 28.8° >	50mm / 39.6° >	35mm / 54.4° >	28mm / 65.5° >	24mm / 73.7° >
----------------	----------------	----------------	----------------	----------------	-------------------------------------	----------------	----------------	----------------	----------------	----------------

Figure: 2.1
View 02 from Davitt Road (near Blackhorse LUAS Stop)
As Existing

BSM
Est. 1968

**Brady Shipman
Martin.**
Built.
Environment.

Project Number:	6110	Document Number:	RP02	Revision:	Planning
Project Name:	NATIONAL PAEDIATRIC HOSPITAL PROJECT	Document Title:	PHOTOMONTAGES	Date:	August 2015



Red Outline represents size and location of Previously Permitted Development

< 73.7° / 24mm	< 65.5° / 28mm	< 54.4° / 35mm	< 39.6° / 50mm	< 28.8° / 70mm	ANGLE OF VISION / LENS FOCAL LENGTH	70mm / 28.8° >	50mm / 39.6° >	35mm / 54.4° >	28mm / 65.5° >	24mm / 73.7° >
----------------	----------------	----------------	----------------	----------------	-------------------------------------	----------------	----------------	----------------	----------------	----------------

Figure: 2.2
View 02 from Davitt Road (near Blackhorse LUAS Stop)
As Previously Permitted. Planning reference: Dublin City Council 2751/09, An Bord Pleanála PL 29S.236071

Project Number:	6110	Document Number:	RP02	Revision:	Planning
Project Name:	NATIONAL PAEDIATRIC HOSPITAL PROJECT	Document Title:	PHOTOMONTAGES	Date:	August 2015



Red Outline represents size and location of Proposed Development

< 73.7° / 24mm	< 65.5° / 28mm	< 54.4° / 35mm	< 39.6° / 50mm	< 28.8° / 70mm	ANGLE OF VISION / LENS FOCAL LENGTH	70mm / 28.8° >	50mm / 39.6° >	35mm / 54.4° >	28mm / 65.5° >	24mm / 73.7° >
----------------	----------------	----------------	----------------	----------------	-------------------------------------	----------------	----------------	----------------	----------------	----------------

Figure: 2.3
View 02 from Davitt Road (near Blackhorse LUAS Stop)
As Proposed

BSM
Est. 1968

**Brady Shipman
Martin.**
Built.
Environment.

Project Number:	6110	Document Number:	RP02	Revision:	Planning
Project Name:	NATIONAL PAEDIATRIC HOSPITAL PROJECT	Document Title:	PHOTOMONTAGES	Date:	August 2015



< 73.7° / 24mm < 65.5° / 28mm < 54.4° / 35mm < 39.6° / 50mm < 28.8° / 70mm ANGLE OF VISION / LENS FOCAL LENGTH 70mm / 28.8° > 50mm / 39.6° > 35mm / 54.4° > 28mm / 65.5° > 24mm / 73.7° >

Figure: 3.1
View 03 from Irish National War Memorial Gardens
As Existing

Project Number:	6110	Document Number:	RP02	Revision:	Planning
Project Name:	NATIONAL PAEDIATRIC HOSPITAL PROJECT	Document Title:	PHOTOMONTAGES	Date:	August 2015



Red Outline represents size and location of Previously Permitted Development

< 73.7° / 24mm	< 65.5° / 28mm	< 54.4° / 35mm	< 39.6° / 50mm	< 28.8° / 70mm	ANGLE OF VISION / LENS FOCAL LENGTH	70mm / 28.8° >	50mm / 39.6° >	35mm / 54.4° >	28mm / 65.5° >	24mm / 73.7° >
----------------	----------------	----------------	----------------	----------------	-------------------------------------	----------------	----------------	----------------	----------------	----------------

Figure: 3.2
View 03 from Irish National War Memorial Gardens
As Previously Permitted. Planning reference: Dublin City Council 2751/09, An Bord Pleanala PL 29S.236072

BSM
Est. 1968

**Brady Shipman
Martin.**
Built.
Environment.

Project Number:	6110	Document Number:	RP02	Revision:	Planning
Project Name:	NATIONAL PAEDIATRIC HOSPITAL PROJECT	Document Title:	PHOTOMONTAGES	Date:	August 2015



Red Outline represents size and location of Proposed Development

< 73.7° / 24mm < 65.5° / 28mm < 54.4° / 35mm < 39.6° / 50mm < 28.8° / 70mm ANGLE OF VISION / LENS FOCAL LENGTH 70mm / 28.8° > 50mm / 39.6° > 35mm / 54.4° > 28mm / 65.5° > 24mm / 73.7° >

Figure: 3.3
View 03 from Irish National War Memorial Gardens
As Proposed

Project Number:	6110	Document Number:	RP02	Revision:	Planning
Project Name:	NATIONAL PAEDIATRIC HOSPITAL PROJECT	Document Title:	PHOTOMONTAGES	Date:	August 2015



< 73.7° / 24mm	< 65.5° / 28mm	< 54.4° / 35mm	< 39.6° / 50mm	< 28.8° / 70mm	ANGLE OF VISION / LENS FOCAL LENGTH	70mm / 28.8° >	50mm / 39.6° >	35mm / 54.4° >	28mm / 65.5° >	24mm / 73.7° >
----------------	----------------	----------------	----------------	----------------	-------------------------------------	----------------	----------------	----------------	----------------	----------------

Figure: 4.1
View 04 from Phoenix Park: 15 Acres
As Existing

BSM
Est. 1968

**Brady Shipman
Martin.**
Built.
Environment.

Project Number:	6110	Document Number:	RP02	Revision:	Planning
Project Name:	NATIONAL PAEDIATRIC HOSPITAL PROJECT	Document Title:	PHOTOMONTAGES	Date:	August 2015



< 73.7° / 24mm	< 65.5° / 28mm	< 54.4° / 35mm	< 39.6° / 50mm	< 28.8° / 70mm	ANGLE OF VISION / LENS FOCAL LENGTH	70mm / 28.8° >	50mm / 39.6° >	35mm / 54.4° >	28mm / 65.5° >	24mm / 73.7° >
----------------	----------------	----------------	----------------	----------------	-------------------------------------	----------------	----------------	----------------	----------------	----------------

Figure: 4.2

View 04 from Phoenix Park: 15 Acres

As Previously Permitted. Planning reference: Dublin City Council 2751/09, An Bord Pleanala PL 29S.236073

BSM

Est.
1968

Brady Shipman
Martin.
Built.
Environment.

Project Number:	6110	Document Number:	RP02	Revision:	Planning
Project Name:	NATIONAL PAEDIATRIC HOSPITAL PROJECT	Document Title:	PHOTOMONTAGES	Date:	August 2015



< 73.7° / 24mm	< 65.5° / 28mm	< 54.4° / 35mm	< 39.6° / 50mm	< 28.8° / 70mm	ANGLE OF VISION / LENS FOCAL LENGTH	70mm / 28.8° >	50mm / 39.6° >	35mm / 54.4° >	28mm / 65.5° >	24mm / 73.7° >
----------------	----------------	----------------	----------------	----------------	-------------------------------------	----------------	----------------	----------------	----------------	----------------

Figure: 4.3
View 04 from Phoenix Park: 15 Acres
As Proposed

BSM
Est.
1968

**Brady Shipman
Martin.**
Built.
Environment.

Project Number:	6110	Document Number:	RP02	Revision:	Planning
Project Name:	NATIONAL PAEDIATRIC HOSPITAL PROJECT	Document Title:	PHOTOMONTAGES	Date:	August 2015



< 73.7° / 24mm

< 65.5° / 28mm

< 54.4° / 35mm

< 39.6° / 50mm

< 28.8° / 70mm

ANGLE OF VISION / LENS FOCAL LENGTH

70mm / 28.8° >

50mm / 39.6° >

35mm / 54.4° >

28mm / 65.5° >

24mm / 73.7° >

Figure: 5.1

View 05 from Phoenix Park: Magazine Fort
As Existing

BSM

Brady Shipman
Martin.
Built.
Environment.

Project Number:	6110	Document Number:	RP02	Revision:	Planning
Project Name:	NATIONAL PAEDIATRIC HOSPITAL PROJECT	Document Title:	PHOTOMONTAGES	Date:	August 2015



< 73.7° / 24mm	< 65.5° / 28mm	< 54.4° / 35mm	< 39.6° / 50mm	< 28.8° / 70mm	ANGLE OF VISION / LENS FOCAL LENGTH	70mm / 28.8° >	50mm / 39.6° >	35mm / 54.4° >	28mm / 65.5° >	24mm / 73.7° >
----------------	----------------	----------------	----------------	----------------	-------------------------------------	----------------	----------------	----------------	----------------	----------------

Figure: 5.2

View 05 from Phoenix Park: Magazine Fort

As Previously Permitted. Planning reference: Dublin City Council 2751/09, An Bord Pleanala PL 29S.236074

BSM

Est.
1968

Brady Shipman
Martin.

Built.
Environment.

Project Number:	6110	Document Number:	RP02	Revision:	Planning
Project Name:	NATIONAL PAEDIATRIC HOSPITAL PROJECT	Document Title:	PHOTOMONTAGES	Date:	August 2015



< 73.7° / 24mm	< 65.5° / 28mm	< 54.4° / 35mm	< 39.6° / 50mm	< 28.8° / 70mm	ANGLE OF VISION / LENS FOCAL LENGTH	70mm / 28.8° >	50mm / 39.6° >	35mm / 54.4° >	28mm / 65.5° >	24mm / 73.7° >
----------------	----------------	----------------	----------------	----------------	-------------------------------------	----------------	----------------	----------------	----------------	----------------

Figure: 5.3
View 05 from Phoenix Park: Magazine Fort
As Proposed

BSM
Est.
1968

**Brady Shipman
Martin.**
Built.
Environment.

Project Number:	6110	Document Number:	RP02	Revision:	Planning
Project Name:	NATIONAL PAEDIATRIC HOSPITAL PROJECT	Document Title:	PHOTOMONTAGES	Date:	August 2015



< 73.7° / 24mm	< 65.5° / 28mm	< 54.4° / 35mm	< 39.6° / 50mm	< 28.8° / 70mm	ANGLE OF VISION / LENS FOCAL LENGTH	70mm / 28.8° >	50mm / 39.6° >	35mm / 54.4° >	28mm / 65.5° >	24mm / 73.7° >
----------------	----------------	----------------	----------------	----------------	-------------------------------------	----------------	----------------	----------------	----------------	----------------

Figure: 6.1
View 06 from Conyngham Road
As Existing

BSM
Est. 1968

**Brady Shipman
Martin.**
Built.
Environment.

Project Number:	6110	Document Number:	RP02	Revision:	Planning
Project Name:	NATIONAL PAEDIATRIC HOSPITAL PROJECT	Document Title:	PHOTOMONTAGES	Date:	August 2015



< 73.7° / 24mm	< 65.5° / 28mm	< 54.4° / 35mm	< 39.6° / 50mm	< 28.8° / 70mm	ANGLE OF VISION / LENS FOCAL LENGTH	70mm / 28.8° >	50mm / 39.6° >	35mm / 54.4° >	28mm / 65.5° >	24mm / 73.7° >
----------------	----------------	----------------	----------------	----------------	-------------------------------------	----------------	----------------	----------------	----------------	----------------

Figure: 6.2
View 06 from Conyngham Road
As Previously Permitted. Planning reference: Dublin City Council 2751/09, An Bord Pleanala PL 29S.236075

BSM
Est. 1968

**Brady Shipman
Martin.**
Built.
Environment.

Project Number:	6110	Document Number:	RP02	Revision:	Planning
Project Name:	NATIONAL PAEDIATRIC HOSPITAL PROJECT	Document Title:	PHOTOMONTAGES	Date:	August 2015



< 73.7° / 24mm	< 65.5° / 28mm	< 54.4° / 35mm	< 39.6° / 50mm	< 28.8° / 70mm	ANGLE OF VISION / LENS FOCAL LENGTH	70mm / 28.8° >	50mm / 39.6° >	35mm / 54.4° >	28mm / 65.5° >	24mm / 73.7° >
----------------	----------------	----------------	----------------	----------------	-------------------------------------	----------------	----------------	----------------	----------------	----------------

Figure: 6.3
View 06 from Conyngham Road
As Proposed

BSM
Est.
1968

**Brady Shipman
Martin.**
Built.
Environment.

Project Number:	6110	Document Number:	RP02	Revision:	Planning
Project Name:	NATIONAL PAEDIATRIC HOSPITAL PROJECT	Document Title:	PHOTOMONTAGES	Date:	August 2015



< 73.7° / 24mm	< 65.5° / 28mm	< 54.4° / 35mm	< 39.6° / 50mm	< 28.8° / 70mm	ANGLE OF VISION / LENS FOCAL LENGTH	70mm / 28.8° >	50mm / 39.6° >	35mm / 54.4° >	28mm / 65.5° >	24mm / 73.7° >
----------------	----------------	----------------	----------------	----------------	-------------------------------------	----------------	----------------	----------------	----------------	----------------

Figure: 7.1
View 07 from Phoenix Park: Chesterfield Ave. / Wellington Monument
As Existing

BSM
Est. 1968

**Brady Shipman
Martin.**
Built.
Environment.

Project Number:	6110	Document Number:	RP02	Revision:	Planning
Project Name:	NATIONAL PAEDIATRIC HOSPITAL PROJECT	Document Title:	PHOTOMONTAGES	Date:	August 2015



< 73.7° / 24mm	< 65.5° / 28mm	< 54.4° / 35mm	< 39.6° / 50mm	< 28.8° / 70mm	ANGLE OF VISION / LENS FOCAL LENGTH	70mm / 28.8° >	50mm / 39.6° >	35mm / 54.4° >	28mm / 65.5° >	24mm / 73.7° >
----------------	----------------	----------------	----------------	----------------	-------------------------------------	----------------	----------------	----------------	----------------	----------------

Figure: 7.2
View 07 from Phoenix Park: Chesterfield Ave. / Wellington Monument
As Previously Permitted. Planning reference: Dublin City Council 2751/09, An Bord Pleanala PL 29S.236076

BSM
Brady Shipman
Martin.
Built.
Environment.

Project Number:	6110	Document Number:	RP02	Revision:	Planning
Project Name:	NATIONAL PAEDIATRIC HOSPITAL PROJECT	Document Title:	PHOTOMONTAGES	Date:	August 2015



< 73.7° / 24mm	< 65.5° / 28mm	< 54.4° / 35mm	< 39.6° / 50mm	< 28.8° / 70mm	ANGLE OF VISION / LENS FOCAL LENGTH	70mm / 28.8° >	50mm / 39.6° >	35mm / 54.4° >	28mm / 65.5° >	24mm / 73.7° >
----------------	----------------	----------------	----------------	----------------	-------------------------------------	----------------	----------------	----------------	----------------	----------------

Figure: 7.3
View 07 from Phoenix Park: Chesterfield Ave. / Wellington Monument
As Proposed

BSM
Est. 1968

**Brady Shipman
Martin.**
Built.
Environment.

Project Number:	6110	Document Number:	RP02	Revision:	Planning
Project Name:	NATIONAL PAEDIATRIC HOSPITAL PROJECT	Document Title:	PHOTOMONTAGES	Date:	August 2015



< 73.7° / 24mm	< 65.5° / 28mm	< 54.4° / 35mm	< 39.6° / 50mm	< 28.8° / 70mm	ANGLE OF VISION / LENS FOCAL LENGTH	70mm / 28.8° >	50mm / 39.6° >	35mm / 54.4° >	28mm / 65.5° >	24mm / 73.7° >
----------------	----------------	----------------	----------------	----------------	-------------------------------------	----------------	----------------	----------------	----------------	----------------

Figure: 8.1
View 08 from Wolfe Tone Quay / Heuston
As Existing

BSM
Est. 1968

**Brady Shipman
Martin.**
Built.
Environment.

Project Number:	6110	Document Number:	RP02	Revision:	Planning
Project Name:	NATIONAL PAEDIATRIC HOSPITAL PROJECT	Document Title:	PHOTOMONTAGES	Date:	August 2015



Red Outline represents size and location of Previously Permitted Development

< 73.7° / 24mm	< 65.5° / 28mm	< 54.4° / 35mm	< 39.6° / 50mm	< 28.8° / 70mm	ANGLE OF VISION / LENS FOCAL LENGTH	70mm / 28.8° >	50mm / 39.6° >	35mm / 54.4° >	28mm / 65.5° >	24mm / 73.7° >
----------------	----------------	----------------	----------------	----------------	-------------------------------------	----------------	----------------	----------------	----------------	----------------

Figure: 8.2
View 08 from Wolfe Tone Quay / Heuston
As Previously Permitted. Planning reference: Dublin City Council 2751/09, An Bord Pleanala PL 29S.236077

BSM
Est. 1968

Brady Shipman Martin.
Built.
Environment.



Red Outline represents size and location of Proposed Development

< 73.7° / 24mm	< 65.5° / 28mm	< 54.4° / 35mm	< 39.6° / 50mm	< 28.8° / 70mm	ANGLE OF VISION / LENS FOCAL LENGTH	70mm / 28.8° >	50mm / 39.6° >	35mm / 54.4° >	28mm / 65.5° >	24mm / 73.7° >
----------------	----------------	----------------	----------------	----------------	-------------------------------------	----------------	----------------	----------------	----------------	----------------

Figure: 8.3
View 08 from Wolfe Tone Quay / Heuston
As Proposed

BSM
Est. 1968

**Brady Shipman
Martin.**
Built.
Environment.

Project Number:	6110	Document Number:	RP02	Revision:	Planning
Project Name:	NATIONAL PAEDIATRIC HOSPITAL PROJECT	Document Title:	PHOTOMONTAGES	Date:	August 2015



< 73.7° / 24mm

< 65.5° / 28mm

< 54.4° / 35mm

< 39.6° / 50mm

< 28.8° / 70mm

ANGLE OF VISION / LENS FOCAL LENGTH

70mm / 28.8° >

50mm / 39.6° >

35mm / 54.4° >

28mm / 65.5° >

24mm / 73.7° >

Figure: 9.1

View 09 from Collins Barracks
As Existing

BSM

Brady Shipman
Martin.
Built.
Environment.

Project Number:	6110	Document Number:	RP02	Revision:	Planning
Project Name:	NATIONAL PAEDIATRIC HOSPITAL PROJECT	Document Title:	PHOTOMONTAGES	Date:	August 2015



< 73.7° / 24mm	< 65.5° / 28mm	< 54.4° / 35mm	< 39.6° / 50mm	< 28.8° / 70mm	ANGLE OF VISION / LENS FOCAL LENGTH	70mm / 28.8° >	50mm / 39.6° >	35mm / 54.4° >	28mm / 65.5° >	24mm / 73.7° >
----------------	----------------	----------------	----------------	----------------	-------------------------------------	----------------	----------------	----------------	----------------	----------------

Figure: 9.2

View 09 from Collins Barracks

As Previously Permitted. Planning reference: Dublin City Council 2751/09, An Bord Pleanala PL 29S.236078

BSM

Est. 1968

Brady Shipman
Martin.

Built.
Environment.

Project Number:	6110	Document Number:	RP02	Revision:	Planning
Project Name:	NATIONAL PAEDIATRIC HOSPITAL PROJECT	Document Title:	PHOTOMONTAGES	Date:	August 2015



< 73.7° / 24mm

< 65.5° / 28mm

< 54.4° / 35mm

< 39.6° / 50mm

< 28.8° / 70mm

ANGLE OF VISION / LENS FOCAL LENGTH

70mm / 28.8° >

50mm / 39.6° >

35mm / 54.4° >

28mm / 65.5° >

24mm / 73.7° >

Figure: 9.3

View 09 from Collins Barracks
As Proposed

BSM

Brady Shipman
Martin.
Built.
Environment.

Project Number:	6110	Document Number:	RP02	Revision:	Planning
Project Name:	NATIONAL PAEDIATRIC HOSPITAL PROJECT	Document Title:	PHOTOMONTAGES	Date:	August 2015



< 73.7° / 24mm	< 65.5° / 28mm	< 54.4° / 35mm	< 39.6° / 50mm	< 28.8° / 70mm	ANGLE OF VISION / LENS FOCAL LENGTH	70mm / 28.8° >	50mm / 39.6° >	35mm / 54.4° >	28mm / 65.5° >	24mm / 73.7° >
----------------	----------------	----------------	----------------	----------------	-------------------------------------	----------------	----------------	----------------	----------------	----------------

Figure: 10.1
View 10 from Thomas Street / James's Street
As Existing

BSM
Est. 1968

**Brady Shipman
Martin.**
Built.
Environment.



Red Outline represents size and location of Previously Permitted Development

< 73.7° / 24mm	< 65.5° / 28mm	< 54.4° / 35mm	< 39.6° / 50mm	< 28.8° / 70mm	ANGLE OF VISION / LENS FOCAL LENGTH	70mm / 28.8° >	50mm / 39.6° >	35mm / 54.4° >	28mm / 65.5° >	24mm / 73.7° >
----------------	----------------	----------------	----------------	----------------	-------------------------------------	----------------	----------------	----------------	----------------	----------------

Figure: 10.2
View 10 from Thomas Street / James's Street
As Previously Permitted. Planning reference: Dublin City Council 2751/09, An Bord Pleanála PL 29S.236079

BSM
Brady Shipman
Martin.
Est. 1968
Built.
Environment.

Project Number:	6110	Document Number:	RP02	Revision:	Planning
Project Name:	NATIONAL PAEDIATRIC HOSPITAL PROJECT	Document Title:	PHOTOMONTAGES	Date:	August 2015



Red Outline represents size and location of Proposed Development

< 73.7° / 24mm	< 65.5° / 28mm	< 54.4° / 35mm	< 39.6° / 50mm	< 28.8° / 70mm	ANGLE OF VISION / LENS FOCAL LENGTH	70mm / 28.8° >	50mm / 39.6° >	35mm / 54.4° >	28mm / 65.5° >	24mm / 73.7° >
----------------	----------------	----------------	----------------	----------------	-------------------------------------	----------------	----------------	----------------	----------------	----------------

Figure: 10.3
View 10 from Thomas Street / James's Street
As Proposed

BSM
Est. 1968

**Brady Shipman
Martin.**
Built.
Environment.

Project Number:	6110	Document Number:	RP02	Revision:	Planning
Project Name:	NATIONAL PAEDIATRIC HOSPITAL PROJECT	Document Title:	PHOTOMONTAGES	Date:	August 2015



< 73.7° / 24mm | < 65.5° / 28mm | < 54.4° / 35mm | < 39.6° / 50mm | < 28.8° / 70mm | ANGLE OF VISION / LENS FOCAL LENGTH | 70mm / 28.8° > | 50mm / 39.6° > | 35mm / 54.4° > | 28mm / 65.5° > | 24mm / 73.7° >

Figure: 11.1
View 11 from Guinness Storehouse GRAVITY Bar
As Existing

Project Number:	6110	Document Number:	RP02	Revision:	Planning
Project Name:	NATIONAL PAEDIATRIC HOSPITAL PROJECT	Document Title:	PHOTOMONTAGES	Date:	August 2015



< 73.7° / 24mm	< 65.5° / 28mm	< 54.4° / 35mm	< 39.6° / 50mm	< 28.8° / 70mm	ANGLE OF VISION / LENS FOCAL LENGTH	70mm / 28.8° >	50mm / 39.6° >	35mm / 54.4° >	28mm / 65.5° >	24mm / 73.7° >
----------------	----------------	----------------	----------------	----------------	-------------------------------------	----------------	----------------	----------------	----------------	----------------

Figure: 11.2

View 11 from Guinness Storehouse GRAVITY Bar

As Previously Permitted. Planning reference: Dublin City Council 2751/09, An Bord Pleanala PL 29S.236080

BSM

Est. 1968

Brady Shipman
Martin.

Built.
Environment.

Project Number:	6110	Document Number:	RP02	Revision:	Planning
Project Name:	NATIONAL PAEDIATRIC HOSPITAL PROJECT	Document Title:	PHOTOMONTAGES	Date:	August 2015



< 73.7° / 24mm	< 65.5° / 28mm	< 54.4° / 35mm	< 39.6° / 50mm	< 28.8° / 70mm	ANGLE OF VISION / LENS FOCAL LENGTH	70mm / 28.8° >	50mm / 39.6° >	35mm / 54.4° >	28mm / 65.5° >	24mm / 73.7° >
----------------	----------------	----------------	----------------	----------------	-------------------------------------	----------------	----------------	----------------	----------------	----------------

Figure: 11.3
View 11 from Guinness Storehouse GRAVITY Bar
As Proposed

Project Number:	6110	Document Number:	RP02	Revision:	Planning
Project Name:	NATIONAL PAEDIATRIC HOSPITAL PROJECT	Document Title:	PHOTOMONTAGES	Date:	August 2015



< 73.7° / 24mm | < 65.5° / 28mm | < 54.4° / 35mm | < 39.6° / 50mm | < 28.8° / 70mm | ANGLE OF VISION / LENS FOCAL LENGTH | 70mm / 28.8° > | 50mm / 39.6° > | 35mm / 54.4° > | 28mm / 65.5° > | 24mm / 73.7° > |

Figure: 12.1
View 12 from South Circular Road - Dolphin's Barn
As Existing

BSM
Est.
1968

**Brady Shipman
Martin.**
Built.
Environment.

Project Number:	6110	Document Number:	RP02	Revision:	Planning
Project Name:	NATIONAL PAEDIATRIC HOSPITAL PROJECT	Document Title:	PHOTOMONTAGES	Date:	August 2015



< 73.7° / 24mm	< 65.5° / 28mm	< 54.4° / 35mm	< 39.6° / 50mm	< 28.8° / 70mm	ANGLE OF VISION / LENS FOCAL LENGTH	70mm / 28.8° >	50mm / 39.6° >	35mm / 54.4° >	28mm / 65.5° >	24mm / 73.7° >
----------------	----------------	----------------	----------------	----------------	-------------------------------------	----------------	----------------	----------------	----------------	----------------

Figure: 12.2
View 12 from South Circular Road - Dolphin's Barn
As Previously Permitted. Planning reference: Dublin City Council 2751/09, An Bord Pleanala PL 29S.236081

BSM
Est. 1968

**Brady Shipman
Martin.**
Built.
Environment.

Project Number:	6110	Document Number:	RP02	Revision:	Planning
Project Name:	NATIONAL PAEDIATRIC HOSPITAL PROJECT	Document Title:	PHOTOMONTAGES	Date:	August 2015



< 73.7° / 24mm	< 65.5° / 28mm	< 54.4° / 35mm	< 39.6° / 50mm	< 28.8° / 70mm	ANGLE OF VISION / LENS FOCAL LENGTH	70mm / 28.8° >	50mm / 39.6° >	35mm / 54.4° >	28mm / 65.5° >	24mm / 73.7° >
----------------	----------------	----------------	----------------	----------------	-------------------------------------	----------------	----------------	----------------	----------------	----------------

Figure: 12.3
View 12 from South Circular Road - Dolphin's Barn
As Proposed

BSM
Est. 1968

**Brady Shipman
Martin.**
Built.
Environment.

Project Number:	6110	Document Number:	RP02	Revision:	Planning
Project Name:	NATIONAL PAEDIATRIC HOSPITAL PROJECT	Document Title:	PHOTOMONTAGES	Date:	August 2015



< 73.7° / 24mm

< 65.5° / 28mm

< 54.4° / 35mm

< 39.6° / 50mm

< 28.8° / 70mm

ANGLE OF VISION / LENS FOCAL LENGTH

70mm / 28.8° >

50mm / 39.6° >

35mm / 54.4° >

28mm / 65.5° >

24mm / 73.7° >

Figure: 13.1
View 13 from Herberton Road at Grand Canal
As Existing

BSM
Est. 1968

**Brady Shipman
Martin.**
Built.
Environment.

Project Number:	6110	Document Number:	RP02	Revision:	Planning
Project Name:	NATIONAL PAEDIATRIC HOSPITAL PROJECT	Document Title:	PHOTOMONTAGES	Date:	August 2015



< 73.7° / 24mm	< 65.5° / 28mm	< 54.4° / 35mm	< 39.6° / 50mm	< 28.8° / 70mm	ANGLE OF VISION / LENS FOCAL LENGTH	70mm / 28.8° >	50mm / 39.6° >	35mm / 54.4° >	28mm / 65.5° >	24mm / 73.7° >
----------------	----------------	----------------	----------------	----------------	-------------------------------------	----------------	----------------	----------------	----------------	----------------

As Previously Permitted. Planning reference: Dublin City Council 2751/09, An Bord Pleanala PL 29S.236082

Figure: 13.2

View 13 from Herberton Road at Grand Canal

BSM

Brady Shipman
Martin.
Built.
Environment.

Project Number:	6110	Document Number:	RP02	Revision:	Planning
Project Name:	NATIONAL PAEDIATRIC HOSPITAL PROJECT	Document Title:	PHOTOMONTAGES	Date:	August 2015



< 73.7° / 24mm	< 65.5° / 28mm	< 54.4° / 35mm	< 39.6° / 50mm	< 28.8° / 70mm	ANGLE OF VISION / LENS FOCAL LENGTH	70mm / 28.8° >	50mm / 39.6° >	35mm / 54.4° >	28mm / 65.5° >	24mm / 73.7° >
----------------	----------------	----------------	----------------	----------------	-------------------------------------	----------------	----------------	----------------	----------------	----------------

Figure: 13.3
View 13 from Herberton Road at Grand Canal
As Proposed

BSM
Est.
1968

**Brady Shipman
Martin.**
Built.
Environment.

Project Number:	6110	Document Number:	RP02	Revision:	Planning
Project Name:	NATIONAL PAEDIATRIC HOSPITAL PROJECT	Document Title:	PHOTOMONTAGES	Date:	August 2015



< 73.7° / 24mm	< 65.5° / 28mm	< 54.4° / 35mm	< 39.6° / 50mm	< 28.8° / 70mm	ANGLE OF VISION / LENS FOCAL LENGTH	70mm / 28.8° >	50mm / 39.6° >	35mm / 54.4° >	28mm / 65.5° >	24mm / 73.7° >
----------------	----------------	----------------	----------------	----------------	-------------------------------------	----------------	----------------	----------------	----------------	----------------

Figure: 14.1
View 14 from Dolphin Road / Mourne Road
As Existing

BSM
Est.
1968

**Brady Shipman
Martin.**
Built.
Environment.

Project Number:	6110	Document Number:	RP02	Revision:	Planning
Project Name:	NATIONAL PAEDIATRIC HOSPITAL PROJECT	Document Title:	PHOTOMONTAGES	Date:	August 2015



< 73.7° / 24mm	< 65.5° / 28mm	< 54.4° / 35mm	< 39.6° / 50mm	< 28.8° / 70mm	ANGLE OF VISION / LENS FOCAL LENGTH	70mm / 28.8° >	50mm / 39.6° >	35mm / 54.4° >	28mm / 65.5° >	24mm / 73.7° >
----------------	----------------	----------------	----------------	----------------	-------------------------------------	----------------	----------------	----------------	----------------	----------------

Figure: 14.2
View 14 from Dolphin Road / Mourne Road
As Previously Permitted. Planning reference: Dublin City Council 2751/09, An Bord Pleanala PL 29S.236083

BSM
Est. 1968

**Brady Shipman
Martin.**
Built.
Environment.

Project Number:	6110	Document Number:	RP02	Revision:	Planning
Project Name:	NATIONAL PAEDIATRIC HOSPITAL PROJECT	Document Title:	PHOTOMONTAGES	Date:	August 2015



< 73.7° / 24mm	< 65.5° / 28mm	< 54.4° / 35mm	< 39.6° / 50mm	< 28.8° / 70mm	ANGLE OF VISION / LENS FOCAL LENGTH	70mm / 28.8° >	50mm / 39.6° >	35mm / 54.4° >	28mm / 65.5° >	24mm / 73.7° >
----------------	----------------	----------------	----------------	----------------	-------------------------------------	----------------	----------------	----------------	----------------	----------------

Figure: 14.3
View 14 from Dolphin Road / Mourne Road
As Proposed

Project Number:	6110	Document Number:	RP02	Revision:	Planning
Project Name:	NATIONAL PAEDIATRIC HOSPITAL PROJECT	Document Title:	PHOTOMONTAGES	Date:	August 2015



< 73.7° / 24mm	< 65.5° / 28mm	< 54.4° / 35mm	< 39.6° / 50mm	< 28.8° / 70mm	ANGLE OF VISION / LENS FOCAL LENGTH	70mm / 28.8° >	50mm / 39.6° >	35mm / 54.4° >	28mm / 65.5° >	24mm / 73.7° >
----------------	----------------	----------------	----------------	----------------	-------------------------------------	----------------	----------------	----------------	----------------	----------------

Figure: 15.1
View 15 from Davitt Road at Suir Road LUAS Stop
As Existing

BSM
Est. 1968

**Brady Shipman
Martin.**
Built.
Environment.



< 73.7° / 24mm	< 65.5° / 28mm	< 54.4° / 35mm	< 39.6° / 50mm	< 28.8° / 70mm	ANGLE OF VISION / LENS FOCAL LENGTH	70mm / 28.8° >	50mm / 39.6° >	35mm / 54.4° >	28mm / 65.5° >	24mm / 73.7° >
----------------	----------------	----------------	----------------	----------------	-------------------------------------	----------------	----------------	----------------	----------------	----------------

Figure: 15.2
View 15 from Davitt Road at Suir Road LUAS Stop
As Previously Permitted. Planning reference: Dublin City Council 2751/09, An Bord Pleanála PL 29S.236084

Project Number:	6110	Document Number:	RP02	Revision:	Planning
Project Name:	NATIONAL PAEDIATRIC HOSPITAL PROJECT	Document Title:	PHOTOMONTAGES	Date:	August 2015



< 73.7° / 24mm < 65.5° / 28mm < 54.4° / 35mm < 39.6° / 50mm < 28.8° / 70mm ANGLE OF VISION / LENS FOCAL LENGTH 70mm / 28.8° > 50mm / 39.6° > 35mm / 54.4° > 28mm / 65.5° > 24mm / 73.7° >

Figure: 15.3
View 15 from Davitt Road at Suir Road LUAS Stop
As Proposed

BSM
Est. 1968

**Brady Shipman
Martin.**
Built.
Environment.

Project Number:	6110	Document Number:	RP02	Revision:	Planning
Project Name:	NATIONAL PAEDIATRIC HOSPITAL PROJECT	Document Title:	PHOTOMONTAGES	Date:	August 2015



< 73.7° / 24mm	< 65.5° / 28mm	< 54.4° / 35mm	< 39.6° / 50mm	< 28.8° / 70mm	ANGLE OF VISION / LENS FOCAL LENGTH	70mm / 28.8° >	50mm / 39.6° >	35mm / 54.4° >	28mm / 65.5° >	24mm / 73.7° >
----------------	----------------	----------------	----------------	----------------	-------------------------------------	----------------	----------------	----------------	----------------	----------------

Figure: 16.1
View 16 from Emmet Road - Inchicore
As Existing

BSM
Est. 1968

**Brady Shipman
Martin.**
Built.
Environment.

Project Number:	6110	Document Number:	RP02	Revision:	Planning
Project Name:	NATIONAL PAEDIATRIC HOSPITAL PROJECT	Document Title:	PHOTOMONTAGES	Date:	August 2015



Red Outline represents size and location of Previously Permitted Development

< 73.7° / 24mm	< 65.5° / 28mm	< 54.4° / 35mm	< 39.6° / 50mm	< 28.8° / 70mm	ANGLE OF VISION / LENS FOCAL LENGTH	70mm / 28.8° >	50mm / 39.6° >	35mm / 54.4° >	28mm / 65.5° >	24mm / 73.7° >
----------------	----------------	----------------	----------------	----------------	-------------------------------------	----------------	----------------	----------------	----------------	----------------

Figure: 16.2
View 16 from Emmet Road - Inchicore
As Previously Permitted. Planning reference: Dublin City Council 2751/09, An Bord Pleanála PL 29S.236085

BSM
Est. 1968

**Brady Shipman
Martin.**
Built.
Environment.

Project Number:	6110	Document Number:	RP02	Revision:	Planning
Project Name:	NATIONAL PAEDIATRIC HOSPITAL PROJECT	Document Title:	PHOTOMONTAGES	Date:	August 2015



< 73.7° / 24mm < 65.5° / 28mm < 54.4° / 35mm < 39.6° / 50mm < 28.8° / 70mm ANGLE OF VISION / LENS FOCAL LENGTH 70mm / 28.8° > 50mm / 39.6° > 35mm / 54.4° > 28mm / 65.5° > 24mm / 73.7° >

Figure: 16.3
View 16 from Emmet Road - Inchicore
As Proposed

BSM
Est. 1968

**Brady Shipman
Martin.**
Built.
Environment.

Project Number:	6110	Document Number:	RP02	Revision:	Planning
Project Name:	NATIONAL PAEDIATRIC HOSPITAL PROJECT	Document Title:	PHOTOMONTAGES	Date:	August 2015



< 73.7° / 24mm	< 65.5° / 28mm	< 54.4° / 35mm	< 39.6° / 50mm	< 28.8° / 70mm	ANGLE OF VISION / LENS FOCAL LENGTH	70mm / 28.8° >	50mm / 39.6° >	35mm / 54.4° >	28mm / 65.5° >	24mm / 73.7° >
----------------	----------------	----------------	----------------	----------------	-------------------------------------	----------------	----------------	----------------	----------------	----------------

Figure: 17.1
View 17 from Emmet Road at South Circular Road
As Existing

BSM
Est. 1968

**Brady Shipman
Martin.**
Built.
Environment.



Red Outline represents size and location of Previously Permitted Development

< 73.7° / 24mm	< 65.5° / 28mm	< 54.4° / 35mm	< 39.6° / 50mm	< 28.8° / 70mm	ANGLE OF VISION / LENS FOCAL LENGTH	70mm / 28.8° >	50mm / 39.6° >	35mm / 54.4° >	28mm / 65.5° >	24mm / 73.7° >
----------------	----------------	----------------	----------------	----------------	-------------------------------------	----------------	----------------	----------------	----------------	----------------

Figure: 17.2
View 17 from Emmet Road at South Circular Road
As Previously Permitted. Planning reference: Dublin City Council 2751/09, An Bord Pleanála PL 29S.236086

BSM
Brady Shipman
Martin.
Built.
Environment.



Red Outline represents size and location of Proposed Development

< 73.7° / 24mm	< 65.5° / 28mm	< 54.4° / 35mm	< 39.6° / 50mm	< 28.8° / 70mm	ANGLE OF VISION / LENS FOCAL LENGTH	70mm / 28.8° >	50mm / 39.6° >	35mm / 54.4° >	28mm / 65.5° >	24mm / 73.7° >
----------------	----------------	----------------	----------------	----------------	-------------------------------------	----------------	----------------	----------------	----------------	----------------

Figure: 17.3
View 17 from Emmet Road at South Circular Road
As Proposed



< 73.7° / 24mm	< 65.5° / 28mm	< 54.4° / 35mm	< 39.6° / 50mm	< 28.8° / 70mm	ANGLE OF VISION / LENS FOCAL LENGTH	70mm / 28.8° >	50mm / 39.6° >	35mm / 54.4° >	28mm / 65.5° >	24mm / 73.7° >
----------------	----------------	----------------	----------------	----------------	-------------------------------------	----------------	----------------	----------------	----------------	----------------

Figure: 18.1
View 18 from Off Kilmainham Lane / Rowerstown Lane
As Existing



Red Outline represents size and location of Previously Permitted Development

< 73.7° / 24mm	< 65.5° / 28mm	< 54.4° / 35mm	< 39.6° / 50mm	< 28.8° / 70mm	ANGLE OF VISION / LENS FOCAL LENGTH	70mm / 28.8° >	50mm / 39.6° >	35mm / 54.4° >	28mm / 65.5° >	24mm / 73.7° >
----------------	----------------	----------------	----------------	----------------	-------------------------------------	----------------	----------------	----------------	----------------	----------------

Figure: 18.2
View 18 from Off Kilmainham Lane / Rowerstown Lane
As Previously Permitted. Planning reference: Dublin City Council 2751/09, An Bord Pleanála PL 29S.236087

Project Number:	6110	Document Number:	RP02	Revision:	Planning
Project Name:	NATIONAL PAEDIATRIC HOSPITAL PROJECT	Document Title:	PHOTOMONTAGES	Date:	August 2015



< 73.7° / 24mm	< 65.5° / 28mm	< 54.4° / 35mm	< 39.6° / 50mm	< 28.8° / 70mm	ANGLE OF VISION / LENS FOCAL LENGTH	70mm / 28.8° >	50mm / 39.6° >	35mm / 54.4° >	28mm / 65.5° >	24mm / 73.7° >
----------------	----------------	----------------	----------------	----------------	-------------------------------------	----------------	----------------	----------------	----------------	----------------

Figure: 18.3
View 18 from Off Kilmainham Lane / Rowerstown Lane
As Proposed

BSM
Est. 1968

**Brady Shipman
Martin.**
Built.
Environment.

Project Number:	6110	Document Number:	RP02	Revision:	Planning
Project Name:	NATIONAL PAEDIATRIC HOSPITAL PROJECT	Document Title:	PHOTOMONTAGES	Date:	August 2015



< 73.7° / 24mm	< 65.5° / 28mm	< 54.4° / 35mm	< 39.6° / 50mm	< 28.8° / 70mm	ANGLE OF VISION / LENS FOCAL LENGTH	70mm / 28.8° >	50mm / 39.6° >	35mm / 54.4° >	28mm / 65.5° >	24mm / 73.7° >
----------------	----------------	----------------	----------------	----------------	-------------------------------------	----------------	----------------	----------------	----------------	----------------

Figure: 19.1
View 19 from Old Kilmainham / Kearns's Place
As Existing

BSM
Est. 1968

**Brady Shipman
Martin.**
Built.
Environment.



Red Outline represents size and location of Previously Permitted Development

< 73.7° / 24mm	< 65.5° / 28mm	< 54.4° / 35mm	< 39.6° / 50mm	< 28.8° / 70mm	ANGLE OF VISION / LENS FOCAL LENGTH	70mm / 28.8° >	50mm / 39.6° >	35mm / 54.4° >	28mm / 65.5° >	24mm / 73.7° >
----------------	----------------	----------------	----------------	----------------	-------------------------------------	----------------	----------------	----------------	----------------	----------------

Figure: 19.2
View 19 from Old Kilmainham / Kearn's Place
As Previously Permitted. Planning reference: Dublin City Council 2751/09, An Bord Pleanala PL 29S.236088



< 73.7° / 24mm	< 65.5° / 28mm	< 54.4° / 35mm	< 39.6° / 50mm	< 28.8° / 70mm	ANGLE OF VISION / LENS FOCAL LENGTH	70mm / 28.8° >	50mm / 39.6° >	35mm / 54.4° >	28mm / 65.5° >	24mm / 73.7° >
----------------	----------------	----------------	----------------	----------------	-------------------------------------	----------------	----------------	----------------	----------------	----------------

Figure: 19.3
View 19 from Old Kilmainham / Kearn's Place
As Proposed

Project Number:	6110	Document Number:	RP02	Revision:	Planning
Project Name:	NATIONAL PAEDIATRIC HOSPITAL PROJECT	Document Title:	PHOTOMONTAGES	Date:	August 2015



< 73.7° / 24mm	< 65.5° / 28mm	< 54.4° / 35mm	< 39.6° / 50mm	< 28.8° / 70mm	ANGLE OF VISION / LENS FOCAL LENGTH	70mm / 28.8° >	50mm / 39.6° >	35mm / 54.4° >	28mm / 65.5° >	24mm / 73.7° >
----------------	----------------	----------------	----------------	----------------	-------------------------------------	----------------	----------------	----------------	----------------	----------------

Figure: 20.1
View 20 from Old Kilmainham / Mount Brown
As Existing

BSM
Est. 1968

**Brady Shipman
Martin.**
Built.
Environment.

Project Number:	6110	Document Number:	RP02	Revision:	Planning
Project Name:	NATIONAL PAEDIATRIC HOSPITAL PROJECT	Document Title:	PHOTOMONTAGES	Date:	August 2015



< 73.7° / 24mm | < 65.5° / 28mm | < 54.4° / 35mm | < 39.6° / 50mm | < 28.8° / 70mm | ANGLE OF VISION / LENS FOCAL LENGTH | 70mm / 28.8° > | 50mm / 39.6° > | 35mm / 54.4° > | 28mm / 65.5° > | 24mm / 73.7° > |

Figure: 20.2
View 20 from Old Kilmainham / Mount Brown
As Proposed

Project Number:	6110	Document Number:	RP02	Revision:	Planning
Project Name:	NATIONAL PAEDIATRIC HOSPITAL PROJECT	Document Title:	PHOTOMONTAGES	Date:	August 2015



< 73.7° / 24mm

< 65.5° / 28mm

< 54.4° / 35mm

< 39.6° / 50mm

< 28.8° / 70mm

ANGLE OF VISION / LENS FOCAL LENGTH

70mm / 28.8° >

50mm / 39.6° >

35mm / 54.4° >

28mm / 65.5° >

24mm / 73.7° >

Figure: 21.1
View 21 from Old Kilmainham / Willie Bermingham Place
As Existing

BSM
Est. 1968

**Brady Shipman
Martin.**
Built.
Environment.



Red Outline represents size and location of Previously Permitted Development

< 73.7° / 24mm	< 65.5° / 28mm	< 54.4° / 35mm	< 39.6° / 50mm	< 28.8° / 70mm	ANGLE OF VISION / LENS FOCAL LENGTH	70mm / 28.8° >	50mm / 39.6° >	35mm / 54.4° >	28mm / 65.5° >	24mm / 73.7° >
----------------	----------------	----------------	----------------	----------------	-------------------------------------	----------------	----------------	----------------	----------------	----------------

Figure: 21.2
View 21 from Old Kilmainham / Willie Bermingham Place
As Previously Permitted. Planning reference: Dublin City Council 2751/09, An Bord Pleanála PL 29S.236090

Project Number:	6110	Document Number:	RP02	Revision:	Planning
Project Name:	NATIONAL PAEDIATRIC HOSPITAL PROJECT	Document Title:	PHOTOMONTAGES	Date:	August 2015



< 73.7° / 24mm

< 65.5° / 28mm

< 54.4° / 35mm

< 39.6° / 50mm

< 28.8° / 70mm

ANGLE OF VISION / LENS FOCAL LENGTH

70mm / 28.8° >

50mm / 39.6° >

35mm / 54.4° >

28mm / 65.5° >

24mm / 73.7° >

Figure: 21.3
View 21 from Old Kilmainham / Willie Bermingham Place
As Proposed

BSM
Est. 1968

**Brady Shipman
Martin.**
Built.
Environment.

Project Number:	6110	Document Number:	RP02	Revision:	Planning
Project Name:	NATIONAL PAEDIATRIC HOSPITAL PROJECT	Document Title:	PHOTOMONTAGES	Date:	August 2015



< 73.7° / 24mm	< 65.5° / 28mm	< 54.4° / 35mm	< 39.6° / 50mm	< 28.8° / 70mm	ANGLE OF VISION / LENS FOCAL LENGTH	70mm / 28.8° >	50mm / 39.6° >	35mm / 54.4° >	28mm / 65.5° >	24mm / 73.7° >
----------------	----------------	----------------	----------------	----------------	-------------------------------------	----------------	----------------	----------------	----------------	----------------

Figure: 22.1
View 22 from Royal Hospital Kilmainham / IMMA Entrance
As Existing



Red Outline represents size and location of Previously Permitted Development

< 73.7° / 24mm	< 65.5° / 28mm	< 54.4° / 35mm	< 39.6° / 50mm	< 28.8° / 70mm	ANGLE OF VISION / LENS FOCAL LENGTH	70mm / 28.8° >	50mm / 39.6° >	35mm / 54.4° >	28mm / 65.5° >	24mm / 73.7° >
----------------	----------------	----------------	----------------	----------------	-------------------------------------	----------------	----------------	----------------	----------------	----------------

Figure: 22.2
View 22 from Royal Hospital Kilmainham / IMMA Entrance
As Previously Permitted. Planning reference: Dublin City Council 2751/09, An Bord Pleanala PL 29S.236091

BSM
Est. 1968

**Brady Shipman
Martin.**
Built.
Environment.

Project Number:	6110	Document Number:	RP02	Revision:	Planning
Project Name:	NATIONAL PAEDIATRIC HOSPITAL PROJECT	Document Title:	PHOTOMONTAGES	Date:	August 2015



< 73.7° / 24mm	< 65.5° / 28mm	< 54.4° / 35mm	< 39.6° / 50mm	< 28.8° / 70mm	ANGLE OF VISION / LENS FOCAL LENGTH	70mm / 28.8° >	50mm / 39.6° >	35mm / 54.4° >	28mm / 65.5° >	24mm / 73.7° >
----------------	----------------	----------------	----------------	----------------	-------------------------------------	----------------	----------------	----------------	----------------	----------------

Figure: 22.3
View 22 from Royal Hospital Kilmainham / IMMA Entrance
As Proposed

Project Number:	6110	Document Number:	RP02	Revision:	Planning
Project Name:	NATIONAL PAEDIATRIC HOSPITAL PROJECT	Document Title:	PHOTOMONTAGES	Date:	August 2015



< 73.7° / 24mm	< 65.5° / 28mm	< 54.4° / 35mm	< 39.6° / 50mm	< 28.8° / 70mm	ANGLE OF VISION / LENS FOCAL LENGTH	70mm / 28.8° >	50mm / 39.6° >	35mm / 54.4° >	28mm / 65.5° >	24mm / 73.7° >
----------------	----------------	----------------	----------------	----------------	-------------------------------------	----------------	----------------	----------------	----------------	----------------

Figure: 23.1
View 23 from Royal Hospital Kilmainham / IMMA 1st Floor
As Existing

BSM
Brady Shipman
Martin.
Built.
Environment.

Project Number:	6110	Document Number:	RP02	Revision:	Planning
Project Name:	NATIONAL PAEDIATRIC HOSPITAL PROJECT	Document Title:	PHOTOMONTAGES	Date:	August 2015



< 73.7° / 24mm	< 65.5° / 28mm	< 54.4° / 35mm	< 39.6° / 50mm	< 28.8° / 70mm	ANGLE OF VISION / LENS FOCAL LENGTH	70mm / 28.8° >	50mm / 39.6° >	35mm / 54.4° >	28mm / 65.5° >	24mm / 73.7° >
----------------	----------------	----------------	----------------	----------------	-------------------------------------	----------------	----------------	----------------	----------------	----------------

Figure: 23.2
View 23 from Royal Hospital Kilmainham / IMMA 1st Floor
As Previously Permitted. Planning reference: Dublin City Council 2751/09, An Bord Pleanala PL 29S.236092

BSM
Est. 1968

**Brady Shipman
Martin.**
Built.
Environment.

Project Number:	6110	Document Number:	RP02	Revision:	Planning
Project Name:	NATIONAL PAEDIATRIC HOSPITAL PROJECT	Document Title:	PHOTOMONTAGES	Date:	August 2015



< 73.7° / 24mm	< 65.5° / 28mm	< 54.4° / 35mm	< 39.6° / 50mm	< 28.8° / 70mm	ANGLE OF VISION / LENS FOCAL LENGTH	70mm / 28.8° >	50mm / 39.6° >	35mm / 54.4° >	28mm / 65.5° >	24mm / 73.7° >
----------------	----------------	----------------	----------------	----------------	-------------------------------------	----------------	----------------	----------------	----------------	----------------

Figure: 23.3
View 23 from Royal Hospital Kilmainham / IMMA 1st Floor
As Proposed

BSM
Est. 1968

**Brady Shipman
Martin.**
Built.
Environment.

Project Number:	6110	Document Number:	RP02	Revision:	Planning
Project Name:	NATIONAL PAEDIATRIC HOSPITAL PROJECT	Document Title:	PHOTOMONTAGES	Date:	August 2015



< 73.7° / 24mm	< 65.5° / 28mm	< 54.4° / 35mm	< 39.6° / 50mm	< 28.8° / 70mm	ANGLE OF VISION / LENS FOCAL LENGTH	70mm / 28.8° >	50mm / 39.6° >	35mm / 54.4° >	28mm / 65.5° >	24mm / 73.7° >
----------------	----------------	----------------	----------------	----------------	-------------------------------------	----------------	----------------	----------------	----------------	----------------

Figure: 24.1
View 24 from Royal Hospital Kilmainham / IMMA 2nd Floor
As Existing

BSM
Brady Shipman
Martin.
Built.
Environment.
Est. 1968

Project Number:	6110	Document Number:	RP02	Revision:	Planning
Project Name:	NATIONAL PAEDIATRIC HOSPITAL PROJECT	Document Title:	PHOTOMONTAGES	Date:	August 2015



< 73.7° / 24mm	< 65.5° / 28mm	< 54.4° / 35mm	< 39.6° / 50mm	< 28.8° / 70mm	ANGLE OF VISION / LENS FOCAL LENGTH	70mm / 28.8° >	50mm / 39.6° >	35mm / 54.4° >	28mm / 65.5° >	24mm / 73.7° >
----------------	----------------	----------------	----------------	----------------	-------------------------------------	----------------	----------------	----------------	----------------	----------------

Figure: 24.2
View 24 from Royal Hospital Kilmainham / IMMA 2nd Floor
As Previously Permitted. Planning reference: Dublin City Council 2751/09, An Bord Pleanala PL 29S.236093

BSM
Brady Shipman
Martin.
Built.
Environment.
Est.
1968

Project Number:	6110	Document Number:	RP02	Revision:	Planning
Project Name:	NATIONAL PAEDIATRIC HOSPITAL PROJECT	Document Title:	PHOTOMONTAGES	Date:	August 2015



< 73.7° / 24mm	< 65.5° / 28mm	< 54.4° / 35mm	< 39.6° / 50mm	< 28.8° / 70mm	ANGLE OF VISION / LENS FOCAL LENGTH	70mm / 28.8° >	50mm / 39.6° >	35mm / 54.4° >	28mm / 65.5° >	24mm / 73.7° >
----------------	----------------	----------------	----------------	----------------	-------------------------------------	----------------	----------------	----------------	----------------	----------------

Figure: 24.3
View 24 from Royal Hospital Kilmainham / IMMA 2nd Floor
As Proposed

BSM
Brady Shipman
Martin.
Built.
Environment.
Est.
1968

Project Number:	6110	Document Number:	RP02	Revision:	Planning
Project Name:	NATIONAL PAEDIATRIC HOSPITAL PROJECT	Document Title:	PHOTOMONTAGES	Date:	August 2015



< 73.7° / 24mm

< 65.5° / 28mm

< 54.4° / 35mm

< 39.6° / 50mm

< 28.8° / 70mm

ANGLE OF VISION / LENS FOCAL LENGTH

70mm / 28.8° >

50mm / 39.6° >

35mm / 54.4° >

28mm / 65.5° >

24mm / 73.7° >

Figure: 25.1
View 25 from Royal Hospital Kilmainham Grounds
As Existing

BSM
Est. 1968

**Brady Shipman
Martin.**
Built.
Environment.

Project Number:	6110	Document Number:	RP02	Revision:	Planning
Project Name:	NATIONAL PAEDIATRIC HOSPITAL PROJECT	Document Title:	PHOTOMONTAGES	Date:	August 2015



Red Outline represents size and location of Previously Permitted Development

< 73.7° / 24mm	< 65.5° / 28mm	< 54.4° / 35mm	< 39.6° / 50mm	< 28.8° / 70mm	ANGLE OF VISION / LENS FOCAL LENGTH	70mm / 28.8° >	50mm / 39.6° >	35mm / 54.4° >	28mm / 65.5° >	24mm / 73.7° >
----------------	----------------	----------------	----------------	----------------	-------------------------------------	----------------	----------------	----------------	----------------	----------------

Figure: 25.2
View 25 from Royal Hospital Kilmainham Grounds
As Previously Permitted. Planning reference: Dublin City Council 2751/09, An Bord Pleanala PL 29S.236094

BSM
Est. 1968

**Brady Shipman
Martin.**
Built.
Environment.

Project Number:	6110	Document Number:	RP02	Revision:	Planning
Project Name:	NATIONAL PAEDIATRIC HOSPITAL PROJECT	Document Title:	PHOTOMONTAGES	Date:	August 2015



< 73.7° / 24mm	< 65.5° / 28mm	< 54.4° / 35mm	< 39.6° / 50mm	< 28.8° / 70mm	ANGLE OF VISION / LENS FOCAL LENGTH	70mm / 28.8° >	50mm / 39.6° >	35mm / 54.4° >	28mm / 65.5° >	24mm / 73.7° >
----------------	----------------	----------------	----------------	----------------	-------------------------------------	----------------	----------------	----------------	----------------	----------------

Figure: 25.3
View 25 from Royal Hospital Kilmainham Grounds
As Proposed

BSM
Est. 1968

**Brady Shipman
Martin.**
Built.
Environment.

Project Number:	6110	Document Number:	RP02	Revision:	Planning
Project Name:	NATIONAL PAEDIATRIC HOSPITAL PROJECT	Document Title:	PHOTOMONTAGES	Date:	August 2015



< 73.7° / 24mm	< 65.5° / 28mm	< 54.4° / 35mm	< 39.6° / 50mm	< 28.8° / 70mm	ANGLE OF VISION / LENS FOCAL LENGTH	70mm / 28.8° >	50mm / 39.6° >	35mm / 54.4° >	28mm / 65.5° >	24mm / 73.7° >
----------------	----------------	----------------	----------------	----------------	-------------------------------------	----------------	----------------	----------------	----------------	----------------

Figure: 26.1
View 26 from James's Street - Mount Brown
As Existing

BSM
Est. 1968

**Brady Shipman
Martin.**
Built.
Environment.

Project Number:	6110	Document Number:	RP02	Revision:	Planning
Project Name:	NATIONAL PAEDIATRIC HOSPITAL PROJECT	Document Title:	PHOTOMONTAGES	Date:	August 2015



Red Outline represents size and location of Previously Permitted Development

< 73.7° / 24mm	< 65.5° / 28mm	< 54.4° / 35mm	< 39.6° / 50mm	< 28.8° / 70mm	ANGLE OF VISION / LENS FOCAL LENGTH	70mm / 28.8° >	50mm / 39.6° >	35mm / 54.4° >	28mm / 65.5° >	24mm / 73.7° >
----------------	----------------	----------------	----------------	----------------	-------------------------------------	----------------	----------------	----------------	----------------	----------------

Figure: 26.2
View 26 from James's Street - Mount Brown
As Previously Permitted. Planning reference: Dublin City Council 2751/09, An Bord Pleanála PL 29S.236095

BSM
Est. 1968

**Brady Shipman
Martin.**
Built.
Environment.

Project Number:	6110	Document Number:	RP02	Revision:	Planning
Project Name:	NATIONAL PAEDIATRIC HOSPITAL PROJECT	Document Title:	PHOTOMONTAGES	Date:	August 2015



< 73.7° / 24mm	< 65.5° / 28mm	< 54.4° / 35mm	< 39.6° / 50mm	< 28.8° / 70mm	ANGLE OF VISION / LENS FOCAL LENGTH	70mm / 28.8° >	50mm / 39.6° >	35mm / 54.4° >	28mm / 65.5° >	24mm / 73.7° >
----------------	----------------	----------------	----------------	----------------	-------------------------------------	----------------	----------------	----------------	----------------	----------------

Figure: 26.3
View 26 from James's Street - Mount Browne
As Proposed

BSM
Est. 1968

**Brady Shipman
Martin.**
Built.
Environment.

Project Number:	6110	Document Number:	RP02	Revision:	Planning
Project Name:	NATIONAL PAEDIATRIC HOSPITAL PROJECT	Document Title:	PHOTOMONTAGES	Date:	August 2015



< 73.7° / 24mm	< 65.5° / 28mm	< 54.4° / 35mm	< 39.6° / 50mm	< 28.8° / 70mm	ANGLE OF VISION / LENS FOCAL LENGTH	70mm / 28.8° >	50mm / 39.6° >	35mm / 54.4° >	28mm / 65.5° >	24mm / 73.7° >
----------------	----------------	----------------	----------------	----------------	-------------------------------------	----------------	----------------	----------------	----------------	----------------

Figure: 27.1
View 27 from James's Street (View East)
As Existing

BSM
Est. 1968

**Brady Shipman
Martin.**
Built.
Environment.

Project Number:	6110	Document Number:	RP02	Revision:	Planning
Project Name:	NATIONAL PAEDIATRIC HOSPITAL PROJECT	Document Title:	PHOTOMONTAGES	Date:	August 2015



< 73.7° / 24mm	< 65.5° / 28mm	< 54.4° / 35mm	< 39.6° / 50mm	< 28.8° / 70mm	ANGLE OF VISION / LENS FOCAL LENGTH	70mm / 28.8° >	50mm / 39.6° >	35mm / 54.4° >	28mm / 65.5° >	24mm / 73.7° >
----------------	----------------	----------------	----------------	----------------	-------------------------------------	----------------	----------------	----------------	----------------	----------------

Figure: 27.2
View 27 from James's Street (View East)
As Proposed

BSM
Est.
1968

**Brady Shipman
Martin.**
Built.
Environment.

Project Number:	6110	Document Number:	RP02	Revision:	Planning
Project Name:	NATIONAL PAEDIATRIC HOSPITAL PROJECT	Document Title:	PHOTOMONTAGES	Date:	August 2015



< 73.7° / 24mm	< 65.5° / 28mm	< 54.4° / 35mm	< 39.6° / 50mm	< 28.8° / 70mm	ANGLE OF VISION / LENS FOCAL LENGTH	70mm / 28.8° >	50mm / 39.6° >	35mm / 54.4° >	28mm / 65.5° >	24mm / 73.7° >
----------------	----------------	----------------	----------------	----------------	-------------------------------------	----------------	----------------	----------------	----------------	----------------

Figure: 28.1
View 28 from James's Street (View West)
As Existing

BSM
Est. 1968

**Brady Shipman
Martin.**
Built.
Environment.

Project Number:	6110	Document Number:	RP02	Revision:	Planning
Project Name:	NATIONAL PAEDIATRIC HOSPITAL PROJECT	Document Title:	PHOTOMONTAGES	Date:	August 2015



Red Outline represents size and location of Previously Permitted Development

< 73.7° / 24mm	< 65.5° / 28mm	< 54.4° / 35mm	< 39.6° / 50mm	< 28.8° / 70mm	ANGLE OF VISION / LENS FOCAL LENGTH	70mm / 28.8° >	50mm / 39.6° >	35mm / 54.4° >	28mm / 65.5° >	24mm / 73.7° >
----------------	----------------	----------------	----------------	----------------	-------------------------------------	----------------	----------------	----------------	----------------	----------------

Figure: 28.2
View 28 from James's Street (View West)
As Previously Permitted. Planning reference: Dublin City Council 2751/09, An Bord Pleanála PL 29S.236097

BSM
Est. 1968

**Brady Shipman
Martin.**
Built.
Environment.

Project Number:	6110	Document Number:	RP02	Revision:	Planning
Project Name:	NATIONAL PAEDIATRIC HOSPITAL PROJECT	Document Title:	PHOTOMONTAGES	Date:	August 2015



< 73.7° / 24mm	< 65.5° / 28mm	< 54.4° / 35mm	< 39.6° / 50mm	< 28.8° / 70mm	ANGLE OF VISION / LENS FOCAL LENGTH	70mm / 28.8° >	50mm / 39.6° >	35mm / 54.4° >	28mm / 65.5° >	24mm / 73.7° >
----------------	----------------	----------------	----------------	----------------	-------------------------------------	----------------	----------------	----------------	----------------	----------------

Figure: 28.3
View 28 from James's Street (View West)
As Proposed

BSM
Est. 1968

**Brady Shipman
Martin.**
Built.
Environment.

Project Number:	6110	Document Number:	RP02	Revision:	Planning
Project Name:	NATIONAL PAEDIATRIC HOSPITAL PROJECT	Document Title:	PHOTOMONTAGES	Date:	August 2015



< 73.7° / 24mm	< 65.5° / 28mm	< 54.4° / 35mm	< 39.6° / 50mm	< 28.8° / 70mm	ANGLE OF VISION / LENS FOCAL LENGTH	70mm / 28.8° >	50mm / 39.6° >	35mm / 54.4° >	28mm / 65.5° >	24mm / 73.7° >
----------------	----------------	----------------	----------------	----------------	-------------------------------------	----------------	----------------	----------------	----------------	----------------

Figure: 29.1
View 29 from St James's Hospital (View North)
As Existing

BSM
Est. 1968

**Brady Shipman
Martin.**
Built.
Environment.

Project Number:	6110	Document Number:	RP02	Revision:	Planning
Project Name:	NATIONAL PAEDIATRIC HOSPITAL PROJECT	Document Title:	PHOTOMONTAGES	Date:	August 2015



< 73.7° / 24mm	< 65.5° / 28mm	< 54.4° / 35mm	< 39.6° / 50mm	< 28.8° / 70mm	ANGLE OF VISION / LENS FOCAL LENGTH	70mm / 28.8° >	50mm / 39.6° >	35mm / 54.4° >	28mm / 65.5° >	24mm / 73.7° >
----------------	----------------	----------------	----------------	----------------	-------------------------------------	----------------	----------------	----------------	----------------	----------------

Figure: 29.2
View 29 from St James's Hospital (View North)
As Proposed

BSM
Est. 1968

**Brady Shipman
Martin.**
Built.
Environment.

Project Number:	6110	Document Number:	RP02	Revision:	Planning
Project Name:	NATIONAL PAEDIATRIC HOSPITAL PROJECT	Document Title:	PHOTOMONTAGES	Date:	August 2015



< 73.7° / 24mm	< 65.5° / 28mm	< 54.4° / 35mm	< 39.6° / 50mm	< 28.8° / 70mm	ANGLE OF VISION / LENS FOCAL LENGTH	70mm / 28.8° >	50mm / 39.6° >	35mm / 54.4° >	28mm / 65.5° >	24mm / 73.7° >
----------------	----------------	----------------	----------------	----------------	-------------------------------------	----------------	----------------	----------------	----------------	----------------

Figure: 30.1
View 30 from Ceannt Fort: Donnellan Avenue
As Existing

BSM
Est. 1968

**Brady Shipman
Martin.**
Built.
Environment.

Project Number:	6110	Document Number:	RP02	Revision:	Planning
Project Name:	NATIONAL PAEDIATRIC HOSPITAL PROJECT	Document Title:	PHOTOMONTAGES	Date:	August 2015



Red Outline represents size and location of Previously Permitted Development

< 73.7° / 24mm	< 65.5° / 28mm	< 54.4° / 35mm	< 39.6° / 50mm	< 28.8° / 70mm	ANGLE OF VISION / LENS FOCAL LENGTH	70mm / 28.8° >	50mm / 39.6° >	35mm / 54.4° >	28mm / 65.5° >	24mm / 73.7° >
----------------	----------------	----------------	----------------	----------------	-------------------------------------	----------------	----------------	----------------	----------------	----------------

Figure: 30.2
View 30 from Ceannt Fort: Donnellan Avenue
As Previously Permitted. Planning reference: Dublin City Council 2751/09, An Bord Pleanála PL 29S.236099

BSM
Est. 1968

**Brady Shipman
Martin.**
Built.
Environment.

Project Number:	6110	Document Number:	RP02	Revision:	Planning
Project Name:	NATIONAL PAEDIATRIC HOSPITAL PROJECT	Document Title:	PHOTOMONTAGES	Date:	August 2015



< 73.7° / 24mm	< 65.5° / 28mm	< 54.4° / 35mm	< 39.6° / 50mm	< 28.8° / 70mm	ANGLE OF VISION / LENS FOCAL LENGTH	70mm / 28.8° >	50mm / 39.6° >	35mm / 54.4° >	28mm / 65.5° >	24mm / 73.7° >
----------------	----------------	----------------	----------------	----------------	-------------------------------------	----------------	----------------	----------------	----------------	----------------

Figure: 30.3
View 30 from Ceannt Fort: Donnellan Avenue
As Proposed

BSM
Est. 1968

**Brady Shipman
Martin.**
Built.
Environment.

Project Number:	6110	Document Number:	RP02	Revision:	Planning
Project Name:	NATIONAL PAEDIATRIC HOSPITAL PROJECT	Document Title:	PHOTOMONTAGES	Date:	August 2015



< 73.7° / 24mm	< 65.5° / 28mm	< 54.4° / 35mm	< 39.6° / 50mm	< 28.8° / 70mm	ANGLE OF VISION / LENS FOCAL LENGTH	70mm / 28.8° >	50mm / 39.6° >	35mm / 54.4° >	28mm / 65.5° >	24mm / 73.7° >
----------------	----------------	----------------	----------------	----------------	-------------------------------------	----------------	----------------	----------------	----------------	----------------

Figure: 31.1
View 31 from Ceannt Fort: Donnellan Avenue
As Existing

BSM
Est. 1968

**Brady Shipman
Martin.**
Built.
Environment.

Project Number:	6110	Document Number:	RP02	Revision:	Planning
Project Name:	NATIONAL PAEDIATRIC HOSPITAL PROJECT	Document Title:	PHOTOMONTAGES	Date:	August 2015



Red Outline represents size and location of Previously Permitted Development

< 73.7° / 24mm	< 65.5° / 28mm	< 54.4° / 35mm	< 39.6° / 50mm	< 28.8° / 70mm	ANGLE OF VISION / LENS FOCAL LENGTH	70mm / 28.8° >	50mm / 39.6° >	35mm / 54.4° >	28mm / 65.5° >	24mm / 73.7° >
----------------	----------------	----------------	----------------	----------------	-------------------------------------	----------------	----------------	----------------	----------------	----------------

Figure: 31.2
View 31 from Ceannt Fort: Donnellan Avenue
As Previously Permitted. Planning reference: Dublin City Council 2751/09, An Bord Pleanala PL 29S.236100

BSM
Est. 1968

**Brady Shipman
Martin.**
Built.
Environment.

Project Number:	6110	Document Number:	RP02	Revision:	Planning
Project Name:	NATIONAL PAEDIATRIC HOSPITAL PROJECT	Document Title:	PHOTOMONTAGES	Date:	August 2015



< 73.7° / 24mm	< 65.5° / 28mm	< 54.4° / 35mm	< 39.6° / 50mm	< 28.8° / 70mm	ANGLE OF VISION / LENS FOCAL LENGTH	70mm / 28.8° >	50mm / 39.6° >	35mm / 54.4° >	28mm / 65.5° >	24mm / 73.7° >
----------------	----------------	----------------	----------------	----------------	-------------------------------------	----------------	----------------	----------------	----------------	----------------

Figure: 31.3
View 31 from Ceannt Fort: Donnellan Avenue
As Proposed

BSM
Est. 1968

**Brady Shipman
Martin.**
Built.
Environment.

Project Number:	6110	Document Number:	RP02	Revision:	Planning
Project Name:	NATIONAL PAEDIATRIC HOSPITAL PROJECT	Document Title:	PHOTOMONTAGES	Date:	August 2015



< 73.7° / 24mm

< 65.5° / 28mm

< 54.4° / 35mm

< 39.6° / 50mm

< 28.8° / 70mm

ANGLE OF VISION / LENS FOCAL LENGTH

70mm / 28.8° >

50mm / 39.6° >

35mm / 54.4° >

28mm / 65.5° >

24mm / 73.7° >

Figure: 32.1

View 32 from James's Walk
As Existing

BSM

Est.
1968

**Brady Shipman
Martin.**
Built.
Environment.

Project Number:	6110	Document Number:	RP02	Revision:	Planning
Project Name:	NATIONAL PAEDIATRIC HOSPITAL PROJECT	Document Title:	PHOTOMONTAGES	Date:	August 2015



< 73.7° / 24mm	< 65.5° / 28mm	< 54.4° / 35mm	< 39.6° / 50mm	< 28.8° / 70mm	ANGLE OF VISION / LENS FOCAL LENGTH	70mm / 28.8° >	50mm / 39.6° >	35mm / 54.4° >	28mm / 65.5° >	24mm / 73.7° >
----------------	----------------	----------------	----------------	----------------	-------------------------------------	----------------	----------------	----------------	----------------	----------------

Figure: 32.2

View 32 from James's Walk

As Previously Permitted. Planning reference: Dublin City Council 2751/09, An Bord Pleanala PL 29S.236098

BSM

Est. 1968

Brady Shipman
Martin.

Built.
Environment.

Project Number:	6110	Document Number:	RP02	Revision:	Planning
Project Name:	NATIONAL PAEDIATRIC HOSPITAL PROJECT	Document Title:	PHOTOMONTAGES	Date:	August 2015



< 73.7° / 24mm	< 65.5° / 28mm	< 54.4° / 35mm	< 39.6° / 50mm	< 28.8° / 70mm	ANGLE OF VISION / LENS FOCAL LENGTH	70mm / 28.8° >	50mm / 39.6° >	35mm / 54.4° >	28mm / 65.5° >	24mm / 73.7° >
----------------	----------------	----------------	----------------	----------------	-------------------------------------	----------------	----------------	----------------	----------------	----------------

Figure: 32.3

View 32 from James's Walk
As Proposed

BSM

Est. 1968

Brady Shipman
Martin.

Built.
Environment.

Project Number:	6110	Document Number:	RP02	Revision:	Planning
Project Name:	NATIONAL PAEDIATRIC HOSPITAL PROJECT	Document Title:	PHOTOMONTAGES	Date:	August 2015



< 73.7° / 24mm	< 65.5° / 28mm	< 54.4° / 35mm	< 39.6° / 50mm	< 28.8° / 70mm	ANGLE OF VISION / LENS FOCAL LENGTH	70mm / 28.8° >	50mm / 39.6° >	35mm / 54.4° >	28mm / 65.5° >	24mm / 73.7° >
----------------	----------------	----------------	----------------	----------------	-------------------------------------	----------------	----------------	----------------	----------------	----------------

Figure: 33.1
View 33 from James's Walk at Rialto LUAS Stop
As Existing

BSM
Est. 1968

**Brady Shipman
Martin.**
Built.
Environment.

Project Number:	6110	Document Number:	RP02	Revision:	Planning
Project Name:	NATIONAL PAEDIATRIC HOSPITAL PROJECT	Document Title:	PHOTOMONTAGES	Date:	August 2015



< 73.7° / 24mm	< 65.5° / 28mm	< 54.4° / 35mm	< 39.6° / 50mm	< 28.8° / 70mm	ANGLE OF VISION / LENS FOCAL LENGTH	70mm / 28.8° >	50mm / 39.6° >	35mm / 54.4° >	28mm / 65.5° >	24mm / 73.7° >
----------------	----------------	----------------	----------------	----------------	-------------------------------------	----------------	----------------	----------------	----------------	----------------

Figure: 33.2
View 33 from James's Walk at Rialto LUAS Stop
As Previously Permitted. Planning reference: Dublin City Council 2751/09, An Bord Pleanála PL 29S.236099

BSM
Est. 1968

**Brady Shipman
Martin.**
Built.
Environment.

Project Number:	6110	Document Number:	RP02	Revision:	Planning
Project Name:	NATIONAL PAEDIATRIC HOSPITAL PROJECT	Document Title:	PHOTOMONTAGES	Date:	August 2015



< 73.7° / 24mm	< 65.5° / 28mm	< 54.4° / 35mm	< 39.6° / 50mm	< 28.8° / 70mm	ANGLE OF VISION / LENS FOCAL LENGTH	70mm / 28.8° >	50mm / 39.6° >	35mm / 54.4° >	28mm / 65.5° >	24mm / 73.7° >
----------------	----------------	----------------	----------------	----------------	-------------------------------------	----------------	----------------	----------------	----------------	----------------

Figure: 33.3
View 33 from James's Walk at Rialto LUAS Stop
As Proposed

BSM
Est. 1968

**Brady Shipman
Martin.**
Built.
Environment.



< 73.7° / 24mm	< 65.5° / 28mm	< 54.4° / 35mm	< 39.6° / 50mm	< 28.8° / 70mm	ANGLE OF VISION / LENS FOCAL LENGTH	70mm / 28.8° >	50mm / 39.6° >	35mm / 54.4° >	28mm / 65.5° >	24mm / 73.7° >
----------------	----------------	----------------	----------------	----------------	-------------------------------------	----------------	----------------	----------------	----------------	----------------

Figure: 34.1
View 34 from South Circular Road - Rialto
As Existing



< 73.7° / 24mm	< 65.5° / 28mm	< 54.4° / 35mm	< 39.6° / 50mm	< 28.8° / 70mm	ANGLE OF VISION / LENS FOCAL LENGTH	70mm / 28.8° >	50mm / 39.6° >	35mm / 54.4° >	28mm / 65.5° >	24mm / 73.7° >
----------------	----------------	----------------	----------------	----------------	-------------------------------------	----------------	----------------	----------------	----------------	----------------

Figure: 34.2
View 34 from South Circular Road - Rialto
As Previously Permitted. Planning reference: Dublin City Council 2751/09, An Bord Pleanala PL 29S.236100

Project Number:	6110	Document Number:	RP02	Revision:	Planning
Project Name:	NATIONAL PAEDIATRIC HOSPITAL PROJECT	Document Title:	PHOTOMONTAGES	Date:	August 2015



< 73.7° / 24mm	< 65.5° / 28mm	< 54.4° / 35mm	< 39.6° / 50mm	< 28.8° / 70mm	ANGLE OF VISION / LENS FOCAL LENGTH	70mm / 28.8° >	50mm / 39.6° >	35mm / 54.4° >	28mm / 65.5° >	24mm / 73.7° >
----------------	----------------	----------------	----------------	----------------	-------------------------------------	----------------	----------------	----------------	----------------	----------------

Figure: 34.3
View 34 from South Circular Road - Rialto
As Proposed

BSM
Est. 1968

**Brady Shipman
Martin.**
Built.
Environment.

Project Number:	6110	Document Number:	RP02	Revision:	Planning
Project Name:	NATIONAL PAEDIATRIC HOSPITAL PROJECT	Document Title:	PHOTOMONTAGES	Date:	August 2015



< 73.7° / 24mm	< 65.5° / 28mm	< 54.4° / 35mm	< 39.6° / 50mm	< 28.8° / 70mm	ANGLE OF VISION / LENS FOCAL LENGTH	70mm / 28.8° >	50mm / 39.6° >	35mm / 54.4° >	28mm / 65.5° >	24mm / 73.7° >
----------------	----------------	----------------	----------------	----------------	-------------------------------------	----------------	----------------	----------------	----------------	----------------

Figure: 35.1
View 35 from Mount Shannon Road
As Existing

BSM
Est. 1968

**Brady Shipman
Martin.**
Built.
Environment.

Project Number:	6110	Document Number:	RP02	Revision:	Planning
Project Name:	NATIONAL PAEDIATRIC HOSPITAL PROJECT	Document Title:	PHOTOMONTAGES	Date:	August 2015



< 73.7° / 24mm	< 65.5° / 28mm	< 54.4° / 35mm	< 39.6° / 50mm	< 28.8° / 70mm	ANGLE OF VISION / LENS FOCAL LENGTH	70mm / 28.8° >	50mm / 39.6° >	35mm / 54.4° >	28mm / 65.5° >	24mm / 73.7° >
----------------	----------------	----------------	----------------	----------------	-------------------------------------	----------------	----------------	----------------	----------------	----------------

Figure: 35.2

View 35 from Mount Shannon Road

As Previously Permitted. Planning reference: Dublin City Council 2751/09, An Bord Pleanala PL 29S.236101

BSM

Est. 1968

Brady Shipman
Martin.

Built.
Environment.

Project Number:	6110	Document Number:	RP02	Revision:	Planning
Project Name:	NATIONAL PAEDIATRIC HOSPITAL PROJECT	Document Title:	PHOTOMONTAGES	Date:	August 2015



< 73.7° / 24mm	< 65.5° / 28mm	< 54.4° / 35mm	< 39.6° / 50mm	< 28.8° / 70mm	ANGLE OF VISION / LENS FOCAL LENGTH	70mm / 28.8° >	50mm / 39.6° >	35mm / 54.4° >	28mm / 65.5° >	24mm / 73.7° >
----------------	----------------	----------------	----------------	----------------	-------------------------------------	----------------	----------------	----------------	----------------	----------------

Figure: 35.3
View 35 from Mount Shannon Road
As Proposed

BSM
Est. 1968

**Brady Shipman
Martin.**
Built.
Environment.

Project Number:	6110	Document Number:	RP02	Revision:	Planning
Project Name:	NATIONAL PAEDIATRIC HOSPITAL PROJECT	Document Title:	PHOTOMONTAGES	Date:	August 2015



< 73.7° / 24mm < 65.5° / 28mm < 54.4° / 35mm < 39.6° / 50mm < 28.8° / 70mm ANGLE OF VISION / LENS FOCAL LENGTH 70mm / 28.8° > 50mm / 39.6° > 35mm / 54.4° > 28mm / 65.5° > 24mm / 73.7° >

Figure: 36.1
View 36 from Mount Shannon Road
As Existing

BSM
Est. 1968

**Brady Shipman
Martin.**
Built.
Environment.

Project Number:	6110	Document Number:	RP02	Revision:	Planning
Project Name:	NATIONAL PAEDIATRIC HOSPITAL PROJECT	Document Title:	PHOTOMONTAGES	Date:	August 2015



< 73.7° / 24mm	< 65.5° / 28mm	< 54.4° / 35mm	< 39.6° / 50mm	< 28.8° / 70mm	ANGLE OF VISION / LENS FOCAL LENGTH	70mm / 28.8° >	50mm / 39.6° >	35mm / 54.4° >	28mm / 65.5° >	24mm / 73.7° >
----------------	----------------	----------------	----------------	----------------	-------------------------------------	----------------	----------------	----------------	----------------	----------------

Figure: 36.2

View 36 from Mount Shannon Road

As Previously Permitted. Planning reference: Dublin City Council 2751/09, An Bord Pleanála PL 29S.236102

BSM
Est. 1968

**Brady Shipman
Martin.**
Built.
Environment.

Project Number:	6110	Document Number:	RP02	Revision:	Planning
Project Name:	NATIONAL PAEDIATRIC HOSPITAL PROJECT	Document Title:	PHOTOMONTAGES	Date:	August 2015



< 73.7° / 24mm	< 65.5° / 28mm	< 54.4° / 35mm	< 39.6° / 50mm	< 28.8° / 70mm	ANGLE OF VISION / LENS FOCAL LENGTH	70mm / 28.8° >	50mm / 39.6° >	35mm / 54.4° >	28mm / 65.5° >	24mm / 73.7° >
----------------	----------------	----------------	----------------	----------------	-------------------------------------	----------------	----------------	----------------	----------------	----------------

Figure: 36.3
View 36 from Mount Shannon Road
As Proposed

BSM
Est. 1968

**Brady Shipman
Martin.**
Built.
Environment.

Project Number:	6110	Document Number:	RP02	Revision:	Planning
Project Name:	NATIONAL PAEDIATRIC HOSPITAL PROJECT	Document Title:	PHOTOMONTAGES	Date:	August 2015



THE IMAGE ABOVE IS A PANORAMA ASSEMBLED FROM TWO OR MORE PHOTOGRAPHS

Figure: 37.1
View 37 from South Circular Road - Kilmainham
As Existing

Project Number:	6110	Document Number:	RP02	Revision:	Planning
Project Name:	NATIONAL PAEDIATRIC HOSPITAL PROJECT	Document Title:	PHOTOMONTAGES	Date:	August 2015



THE IMAGE ABOVE IS A PANORAMA ASSEMBLED FROM TWO OR MORE PHOTOGRAPHS

Figure: 37.2

View 37 from South Circular Road - Kilmainham

As Previously Permitted. Planning reference: Dublin City Council 2751/09, An Bord Pleanála PL 29S.236103

Project Number:	6110	Document Number:	RP02	Revision:	Planning
Project Name:	NATIONAL PAEDIATRIC HOSPITAL PROJECT	Document Title:	PHOTOMONTAGES	Date:	August 2015



THE IMAGE ABOVE IS A PANORAMA ASSEMBLED FROM TWO OR MORE PHOTOGRAPHS

Figure: 37.3
View 37 from South Circular Road - Kilmainham
As Proposed

Project Number:	6110	Document Number:	RP02	Revision:	Planning
Project Name:	NATIONAL PAEDIATRIC HOSPITAL PROJECT	Document Title:	PHOTOMONTAGES	Date:	August 2015



< 73.7° / 24mm	< 65.5° / 28mm	< 54.4° / 35mm	< 39.6° / 50mm	< 28.8° / 70mm	ANGLE OF VISION / LENS FOCAL LENGTH	70mm / 28.8° >	50mm / 39.6° >	35mm / 54.4° >	28mm / 65.5° >	24mm / 73.7° >
----------------	----------------	----------------	----------------	----------------	-------------------------------------	----------------	----------------	----------------	----------------	----------------

Figure: 38.1
View 38 from South Circular Road - Kilmainham
As Existing

BSM
Est. 1968

**Brady Shipman
Martin.**
Built.
Environment.

Project Number:	6110	Document Number:	RP02	Revision:	Planning
Project Name:	NATIONAL PAEDIATRIC HOSPITAL PROJECT	Document Title:	PHOTOMONTAGES	Date:	August 2015



< 73.7° / 24mm	< 65.5° / 28mm	< 54.4° / 35mm	< 39.6° / 50mm	< 28.8° / 70mm	ANGLE OF VISION / LENS FOCAL LENGTH	70mm / 28.8° >	50mm / 39.6° >	35mm / 54.4° >	28mm / 65.5° >	24mm / 73.7° >
----------------	----------------	----------------	----------------	----------------	-------------------------------------	----------------	----------------	----------------	----------------	----------------

Figure: 38.2
View 38 from South Circular Road - Kilmainham
As Previously Permitted. Planning reference: Dublin City Council 2751/09, An Bord Pleanala PL 29S.236104

BSM
Est. 1968

**Brady Shipman
Martin.**
Built.
Environment.

Project Number:	6110	Document Number:	RP02	Revision:	Planning
Project Name:	NATIONAL PAEDIATRIC HOSPITAL PROJECT	Document Title:	PHOTOMONTAGES	Date:	August 2015



< 73.7° / 24mm	< 65.5° / 28mm	< 54.4° / 35mm	< 39.6° / 50mm	< 28.8° / 70mm	ANGLE OF VISION / LENS FOCAL LENGTH	70mm / 28.8° >	50mm / 39.6° >	35mm / 54.4° >	28mm / 65.5° >	24mm / 73.7° >
----------------	----------------	----------------	----------------	----------------	-------------------------------------	----------------	----------------	----------------	----------------	----------------

Figure: 38.3
View 38 from South Circular Road - Kilmainham
As Proposed

BSM
Est. 1968

**Brady Shipman
Martin.**
Built.
Environment.



< 73.7° / 24mm < 65.5° / 28mm < 54.4° / 35mm < 39.6° / 50mm < 28.8° / 70mm ANGLE OF VISION / LENS FOCAL LENGTH 70mm / 28.8° > 50mm / 39.6° > 35mm / 54.4° > 28mm / 65.5° > 24mm / 73.7° >

Figure: 39.1
View 39 from South Circular Road - Kilmainham
As Existing



< 73.7° / 24mm	< 65.5° / 28mm	< 54.4° / 35mm	< 39.6° / 50mm	< 28.8° / 70mm	ANGLE OF VISION / LENS FOCAL LENGTH	70mm / 28.8° >	50mm / 39.6° >	35mm / 54.4° >	28mm / 65.5° >	24mm / 73.7° >
----------------	----------------	----------------	----------------	----------------	-------------------------------------	----------------	----------------	----------------	----------------	----------------

Figure: 39.2
View 39 from South Circular Road - Kilmainham
As Previously Permitted. Planning reference: Dublin City Council 2751/09, An Bord Pleanála PL 29S.236105



< 73.7° / 24mm	< 65.5° / 28mm	< 54.4° / 35mm	< 39.6° / 50mm	< 28.8° / 70mm	ANGLE OF VISION / LENS FOCAL LENGTH	70mm / 28.8° >	50mm / 39.6° >	35mm / 54.4° >	28mm / 65.5° >	24mm / 73.7° >
----------------	----------------	----------------	----------------	----------------	-------------------------------------	----------------	----------------	----------------	----------------	----------------

Figure: 39.3
View 39 from South Circular Road - Kilmainham
As Proposed



< 73.7° / 24mm	< 65.5° / 28mm	< 54.4° / 35mm	< 39.6° / 50mm	< 28.8° / 70mm	ANGLE OF VISION / LENS FOCAL LENGTH	70mm / 28.8° >	50mm / 39.6° >	35mm / 54.4° >	28mm / 65.5° >	24mm / 73.7° >
----------------	----------------	----------------	----------------	----------------	-------------------------------------	----------------	----------------	----------------	----------------	----------------

Figure: 40.1
View 40 from Brookfield Street
As Existing

BSM

Est. 1968

Brady Shipman
Martin.
Built.
Environment.



< 73.7° / 24mm	< 65.5° / 28mm	< 54.4° / 35mm	< 39.6° / 50mm	< 28.8° / 70mm	ANGLE OF VISION / LENS FOCAL LENGTH	70mm / 28.8° >	50mm / 39.6° >	35mm / 54.4° >	28mm / 65.5° >	24mm / 73.7° >
----------------	----------------	----------------	----------------	----------------	-------------------------------------	----------------	----------------	----------------	----------------	----------------

Figure: 40.2
View 40 from Brookfield Street
As Previously Permitted. Planning reference: Dublin City Council 2751/09, An Bord Pleanala PL 29S.236106

BSM
Est. 1968

**Brady Shipman
Martin.**
Built.
Environment.

Project Number:	6110	Document Number:	RP02	Revision:	Planning
Project Name:	NATIONAL PAEDIATRIC HOSPITAL PROJECT	Document Title:	PHOTOMONTAGES	Date:	August 2015



< 73.7° / 24mm	< 65.5° / 28mm	< 54.4° / 35mm	< 39.6° / 50mm	< 28.8° / 70mm	ANGLE OF VISION / LENS FOCAL LENGTH	70mm / 28.8° >	50mm / 39.6° >	35mm / 54.4° >	28mm / 65.5° >	24mm / 73.7° >
----------------	----------------	----------------	----------------	----------------	-------------------------------------	----------------	----------------	----------------	----------------	----------------

Figure: 40.3
View 40 from Brookfield Street
As Proposed

BSM
Brady Shipman
Martin.
Est.
1968
Built.
Environment.

Project Number:	6110	Document Number:	RP02	Revision:	Planning
Project Name:	NATIONAL PAEDIATRIC HOSPITAL PROJECT	Document Title:	PHOTOMONTAGES	Date:	August 2015



< 73.7° / 24mm	< 65.5° / 28mm	< 54.4° / 35mm	< 39.6° / 50mm	< 28.8° / 70mm	ANGLE OF VISION / LENS FOCAL LENGTH	70mm / 28.8° >	50mm / 39.6° >	35mm / 54.4° >	28mm / 65.5° >	24mm / 73.7° >
----------------	----------------	----------------	----------------	----------------	-------------------------------------	----------------	----------------	----------------	----------------	----------------

Figure: 41.1
View 41 from Cameron Square
As Existing

BSM
Est.
1968

**Brady Shipman
Martin.**
Built.
Environment.

Project Number:	6110	Document Number:	RP02	Revision:	Planning
Project Name:	NATIONAL PAEDIATRIC HOSPITAL PROJECT	Document Title:	PHOTOMONTAGES	Date:	August 2015



Red Outline represents size and location of Previously Permitted Development

< 73.7° / 24mm	< 65.5° / 28mm	< 54.4° / 35mm	< 39.6° / 50mm	< 28.8° / 70mm	ANGLE OF VISION / LENS FOCAL LENGTH	70mm / 28.8° >	50mm / 39.6° >	35mm / 54.4° >	28mm / 65.5° >	24mm / 73.7° >
----------------	----------------	----------------	----------------	----------------	-------------------------------------	----------------	----------------	----------------	----------------	----------------

Figure: 41.2
View 41 from Cameron Square
As Previously Permitted. Planning reference: Dublin City Council 2751/09, An Bord Pleanala PL 29S.236106

BSM
Est. 1968

**Brady Shipman
Martin.**
Built.
Environment.

Project Number:	6110	Document Number:	RP02	Revision:	Planning
Project Name:	NATIONAL PAEDIATRIC HOSPITAL PROJECT	Document Title:	PHOTOMONTAGES	Date:	August 2015



< 73.7° / 24mm	< 65.5° / 28mm	< 54.4° / 35mm	< 39.6° / 50mm	< 28.8° / 70mm	ANGLE OF VISION / LENS FOCAL LENGTH	70mm / 28.8° >	50mm / 39.6° >	35mm / 54.4° >	28mm / 65.5° >	24mm / 73.7° >
----------------	----------------	----------------	----------------	----------------	-------------------------------------	----------------	----------------	----------------	----------------	----------------

Figure: 41.3
View 41 from Cameron Square
As Proposed

BSM
Est.
1968

**Brady Shipman
Martin.**
Built.
Environment.

Project Number:	6110	Document Number:	RP02	Revision:	Planning
Project Name:	NATIONAL PAEDIATRIC HOSPITAL PROJECT	Document Title:	PHOTOMONTAGES	Date:	August 2015



< 73.7° / 24mm	< 65.5° / 28mm	< 54.4° / 35mm	< 39.6° / 50mm	< 28.8° / 70mm	ANGLE OF VISION / LENS FOCAL LENGTH	70mm / 28.8° >	50mm / 39.6° >	35mm / 54.4° >	28mm / 65.5° >	24mm / 73.7° >
----------------	----------------	----------------	----------------	----------------	-------------------------------------	----------------	----------------	----------------	----------------	----------------

Figure: 42.1
View 42 from Cameron Square
As Existing

BSM

Est.
1968

Brady Shipman
Martin.
Built.
Environment.

Project Number:	6110	Document Number:	RP02	Revision:	Planning
Project Name:	NATIONAL PAEDIATRIC HOSPITAL PROJECT	Document Title:	PHOTOMONTAGES	Date:	August 2015



Red Outline represents size and location of Previously Permitted Development

< 73.7° / 24mm	< 65.5° / 28mm	< 54.4° / 35mm	< 39.6° / 50mm	< 28.8° / 70mm	ANGLE OF VISION / LENS FOCAL LENGTH	70mm / 28.8° >	50mm / 39.6° >	35mm / 54.4° >	28mm / 65.5° >	24mm / 73.7° >
----------------	----------------	----------------	----------------	----------------	-------------------------------------	----------------	----------------	----------------	----------------	----------------

Figure: 42.2
View 42 from Cameron Square
As Previously Permitted. Planning reference: Dublin City Council 2751/09, An Bord Pleanála PL 29S.236106

BSM
Est. 1968

**Brady Shipman
Martin.**
Built.
Environment.

Project Number:	6110	Document Number:	RP02	Revision:	Planning
Project Name:	NATIONAL PAEDIATRIC HOSPITAL PROJECT	Document Title:	PHOTOMONTAGES	Date:	August 2015



< 73.7° / 24mm	< 65.5° / 28mm	< 54.4° / 35mm	< 39.6° / 50mm	< 28.8° / 70mm	ANGLE OF VISION / LENS FOCAL LENGTH	70mm / 28.8° >	50mm / 39.6° >	35mm / 54.4° >	28mm / 65.5° >	24mm / 73.7° >
----------------	----------------	----------------	----------------	----------------	-------------------------------------	----------------	----------------	----------------	----------------	----------------

Figure: 42.3
View 42 from Cameron Square
As Proposed

BSM
Est.
1968

**Brady Shipman
Martin.**
Built.
Environment.

Project Number:	6110	Document Number:	RP02	Revision:	Planning
Project Name:	NATIONAL PAEDIATRIC HOSPITAL PROJECT	Document Title:	PHOTOMONTAGES	Date:	August 2015

New children’s hospital satellite centre at Tallaght Hospital

Project Number:	6110	Document Number:	RP02	Revision:	Planning
Project Name:	NATIONAL PAEDIATRIC HOSPITAL PROJECT	Document Title:	PHOTOMONTAGES	Date:	August 2015

Project Name: NATIONAL PAEDIATRIC HOSPITAL PROJECT (TALLAGHT HOSPITAL)



1. View to west from internal link road
2. View to south from multistorey car park

Figure: T1
View Location Map Tallaght Hospital
TH-HLM-A-VS-XX-Z0-9033




Project Number:	6110	Document Number:	RP02	Revision:	Planning
Project Name:	NATIONAL PAEDIATRIC HOSPITAL PROJECT	Document Title:	PHOTOMONTAGES	Date:	August 2015

Project Name: NATIONAL PAEDIATRIC HOSPITAL PROJECT (TALLAGHT HOSPITAL)



Figure: T1.1
View 1 'As Existing' to west from internal link road
TH-HLM-A-VS-XX-Z0-9001.1 Drawn by: TM Checked by: SB



Project Number:	6110	Document Number:	RP02	Revision:	Planning
Project Name:	NATIONAL PAEDIATRIC HOSPITAL PROJECT	Document Title:	PHOTOMONTAGES	Date:	August 2015

Project Name: NATIONAL PAEDIATRIC HOSPITAL PROJECT (TALLAGHT HOSPITAL)



Figure: T1.2
View 1 'As Proposed' to west from internal link road
TH-HLM-A-VS-XX-Z0-9001.1 Drawn by: TM Checked by: SB



Project Number:	6110	Document Number:	RP02	Revision:	Planning
Project Name:	NATIONAL PAEDIATRIC HOSPITAL PROJECT	Document Title:	PHOTOMONTAGES	Date:	August 2015

Project Name: NATIONAL PAEDIATRIC HOSPITAL PROJECT (TALLAGHT HOSPITAL)



Figure: T2.1

View 2 'As Existing' to south from multistorey carpark
TH-HLM-A-VS-XX-Z0-9032.1 Drawn by: TM Checked by: SB



Project Number:	6110	Document Number:	RP02	Revision:	Planning
Project Name:	NATIONAL PAEDIATRIC HOSPITAL PROJECT	Document Title:	PHOTOMONTAGES	Date:	August 2015

Project Name: NATIONAL PAEDIATRIC HOSPITAL PROJECT (TALLAGHT HOSPITAL)



Figure: T2.2

View 2 'As Proposed' to south from multistorey carpark
TH-HLM-A-VS-XX-Z0-9032.2 Drawn by: TM Checked by: SB

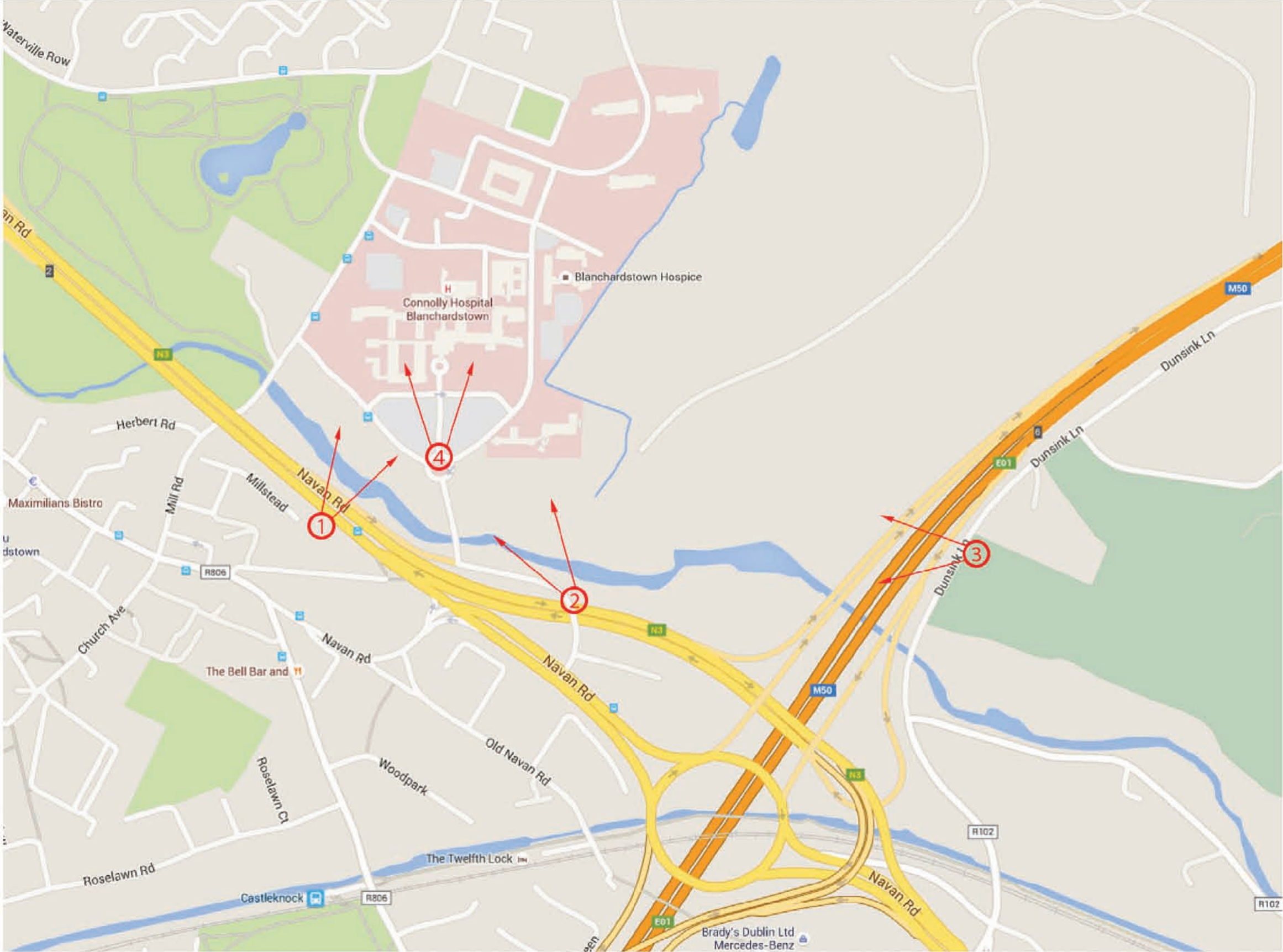


Project Number:	6110	Document Number:	RP02	Revision:	Planning
Project Name:	NATIONAL PAEDIATRIC HOSPITAL PROJECT	Document Title:	PHOTOMONTAGES	Date:	August 2015

New children’s hospital satellite centre at Connolly Hospital

Project Number:	6110	Document Number:	RP02	Revision:	Planning
Project Name:	NATIONAL PAEDIATRIC HOSPITAL PROJECT	Document Title:	PHOTOMONTAGES	Date:	August 2015

Project Name: NATIONAL PAEDIATRIC HOSPITAL PROJECT (CONNOLLY HOSPITAL)



1. View to north east from N3 Navan Road
2. View to north west from N3 Navan Road slip
3. View to west from Dunsink Lane
4. View to north from hospital roundabout

Figure: C1
View Location Map Connolly Hospital
CH-HLM-A-VS-XX-Z0-9005



Project Number:	6110	Document Number:	RP02	Revision:	Planning
Project Name:	NATIONAL PAEDIATRIC HOSPITAL PROJECT	Document Title:	PHOTOMONTAGES	Date:	August 2015

Project Name: NATIONAL PAEDIATRIC HOSPITAL PROJECT (CONNOLLY HOSPITAL)



Figure: C1.1

View 1 'As Existing' to north east from N3 Navan Road
CH-HLM-A-VS-XX-Z0-9001.1 Drawn by: TM Checked by: SB



Project Number:	6110	Document Number:	RP02	Revision:	Planning
Project Name:	NATIONAL PAEDIATRIC HOSPITAL PROJECT	Document Title:	PHOTOMONTAGES	Date:	August 2015

Project Name: NATIONAL PAEDIATRIC HOSPITAL PROJECT (CONNOLLY HOSPITAL)



Figure: C1.2

View 1 'As Proposed' to north east from N3 Navan Road
CH-HLM-A-VS-XX-Z0-9001.2 Drawn by: TM Checked by: SB



Project Number:	6110	Document Number:	RP02	Revision:	Planning
Project Name:	NATIONAL PAEDIATRIC HOSPITAL PROJECT	Document Title:	PHOTOMONTAGES	Date:	August 2015

Project Name: NATIONAL PAEDIATRIC HOSPITAL PROJECT (CONNOLLY HOSPITAL)



Figure: C2.1

View 2 'As Existing' to north west from N3 Navan Road slip
CH-HLM-A-VS-XX-Z0-9002.1 Drawn by: TM Checked by: SB



Project Number:	6110	Document Number:	RP02	Revision:	Planning
Project Name:	NATIONAL PAEDIATRIC HOSPITAL PROJECT	Document Title:	PHOTOMONTAGES	Date:	August 2015

Project Name: NATIONAL PAEDIATRIC HOSPITAL PROJECT (CONNOLLY HOSPITAL)



Figure: C2.2

View 2 'As Proposed' to north west from N3 Navan Road slip
CH-HLM-A-VS-XX-Z0-9002.2 Drawn by: TM Checked by: SB



Project Number:	6110	Document Number:	RP02	Revision:	Planning
Project Name:	NATIONAL PAEDIATRIC HOSPITAL PROJECT	Document Title:	PHOTOMONTAGES	Date:	August 2015

Project Name: NATIONAL PAEDIATRIC HOSPITAL PROJECT (CONNOLLY HOSPITAL)



Figure: C3.1

View 3 'As Existing' to west from Dunsink Lane
CH-HLM-A-VS-XX-Z0-9003.1 Drawn by: TM Checked by: SB



Project Number:	6110	Document Number:	RP02	Revision:	Planning
Project Name:	NATIONAL PAEDIATRIC HOSPITAL PROJECT	Document Title:	PHOTOMONTAGES	Date:	August 2015

Project Name: NATIONAL PAEDIATRIC HOSPITAL PROJECT (CONNOLLY HOSPITAL)



Figure: C3.2
View 3 'As Proposed' to west from Dunsink Lane
CH-HLM-A-VS-XX-Z0-9003.2 Drawn by: TM Checked by: SB



Project Number:	6110	Document Number:	RP02	Revision:	Planning
Project Name:	NATIONAL PAEDIATRIC HOSPITAL PROJECT	Document Title:	PHOTOMONTAGES	Date:	August 2015

Project Name: NATIONAL PAEDIATRIC HOSPITAL PROJECT (CONNOLLY HOSPITAL)



Figure: C4.1

View 4 'As Existing' to north from hospital roundabout
CH-HLM-A-VS-XX-Z0-9004.1 Drawn by: TM Checked by: SB



Project Number:	6110	Document Number:	RP02	Revision:	Planning
Project Name:	NATIONAL PAEDIATRIC HOSPITAL PROJECT	Document Title:	PHOTOMONTAGES	Date:	August 2015

Project Name: NATIONAL PAEDIATRIC HOSPITAL PROJECT (CONNOLLY HOSPITAL)



Figure: C4.2

View 4 'As Proposed' to north from hospital roundabout
CH-HLM-A-VS-XX-Z0-9004.2 Drawn by: TM Checked by: SB

