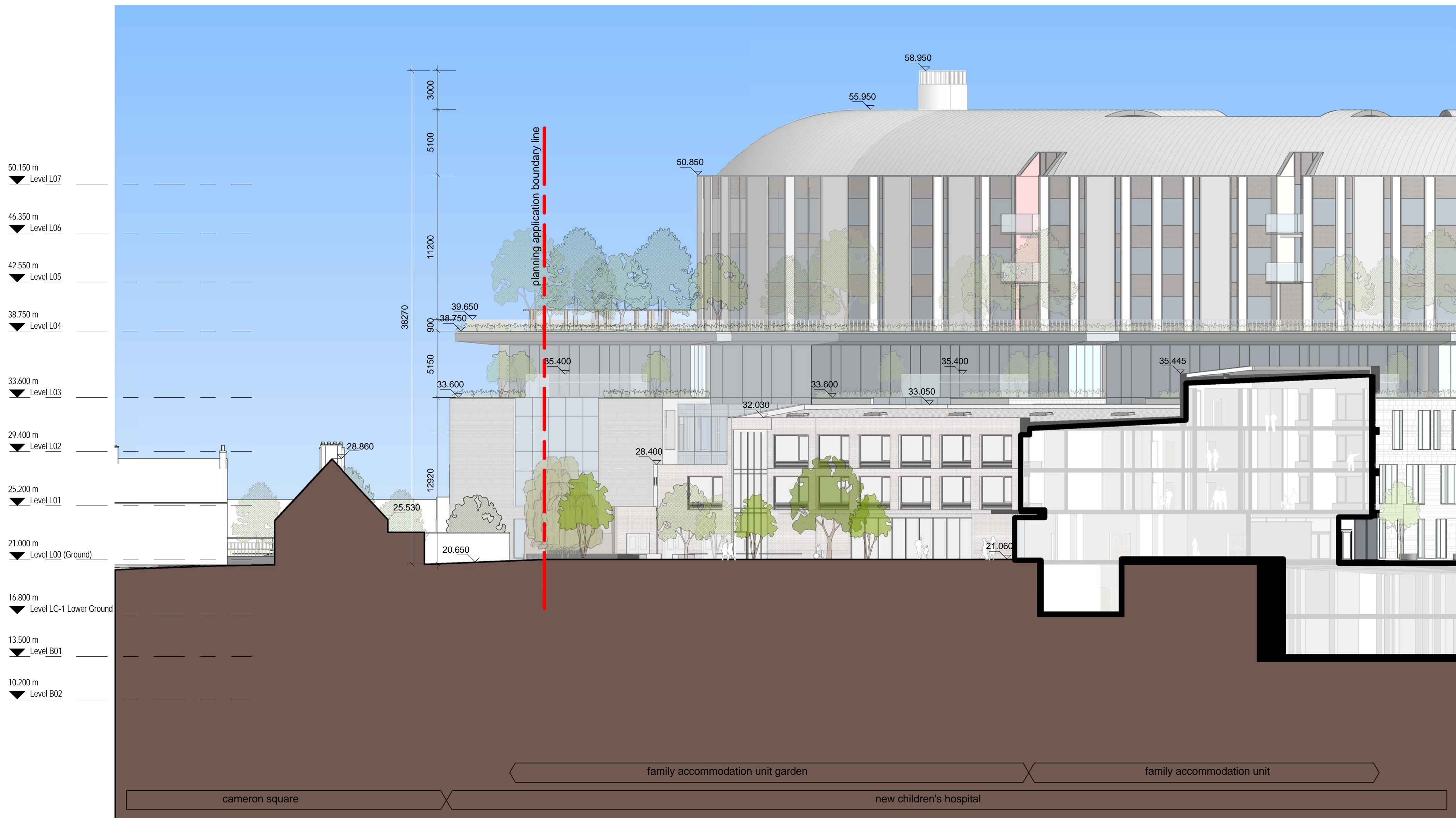




26 BROOKFIELD ROAD ELEVATION
1 : 200

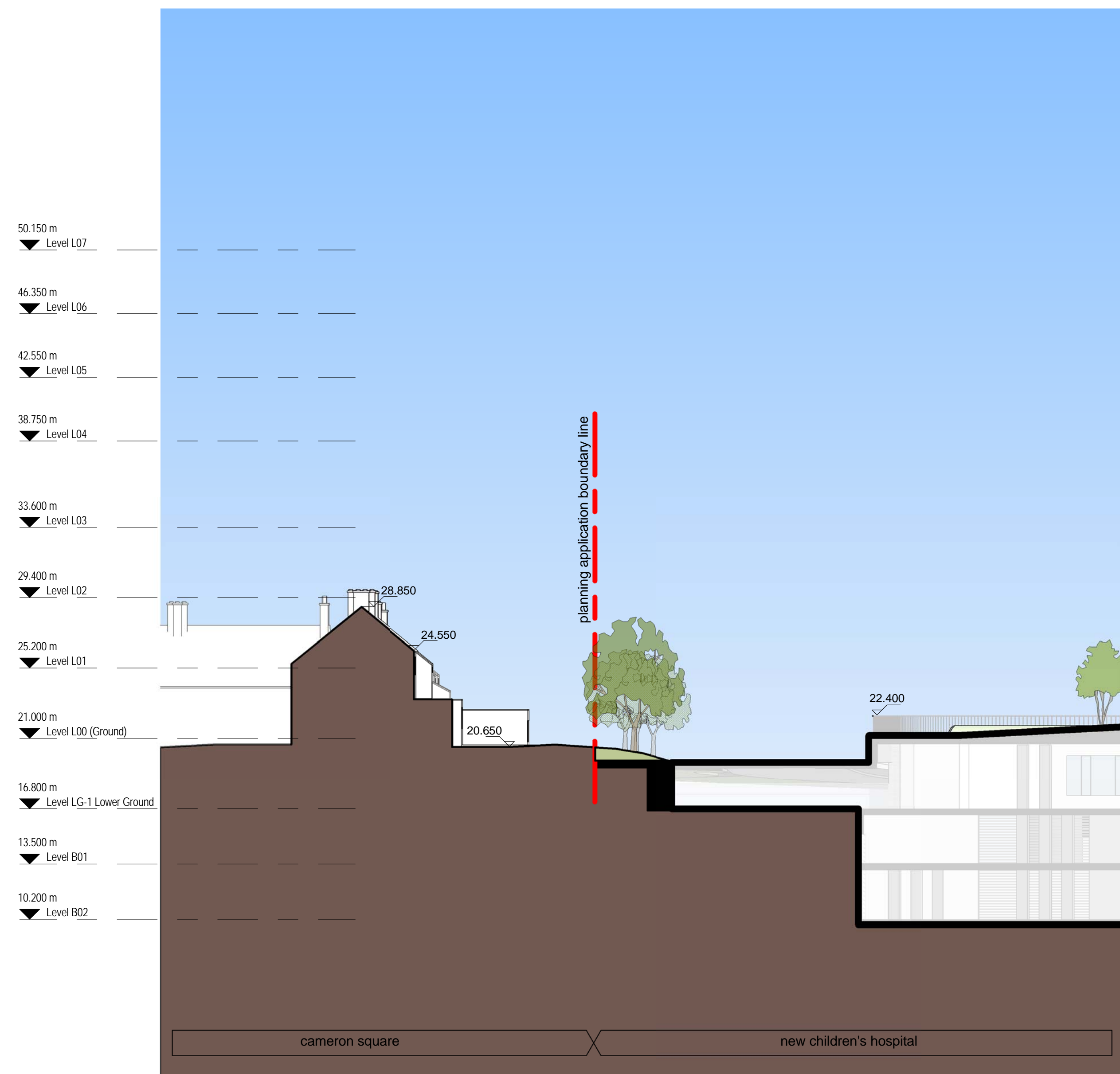


27 WEST PIAZZA SECTION
1 : 200



33 SECTION THROUGH CAMERON SQUARE
1 : 200

REFER TO SHEET 3201 - 33 FOR CORRESPONDING EXISTING CONDITION



34 SECTION THROUGH CAMERON SQUARE
1 : 200

REFER TO SHEET 3202 - 34 FOR CORRESPONDING EXISTING CONDITION

REVISION / DESCRIPTION				DRAWN / CHECKED / DATE			
BDP				DH			
August 2015							

Exterior Envelope Specification			
CONCRETE CN1 - Architectural Concrete Type 1 CN2 - Architectural Concrete Type 2 COPIING CO1 - Anodized Aluminium Coping CO2 - Stone Coping CURTAIN WALL CW1 - Unitised Aluminium Curtainwall CW2 - Structural Glass System CW3 - Glazed Panel to Soffit (back panel) CW4 - Blome CW5 - Roof Glazing System CW6 - Aluminium Curtainwall, Recessed CW7 - Aluminium Curtainwall, Recessed into perimeter wall		EXTERNAL DOORS DO1 - Glass Double Door DO2 - Revolving Door DO3 - Glass Single Door DO4 - Metal Single Door DO5 - Metal Double Door DO6 - Frameless Glass Door DO7 - Steel Gate DRYHOUSE DH1 - Stainless Steel Outer GLAZING GL1 - Clear Double Glazing GL2 - Clear Double Glazing with Integral Blind GL3 - Clear Double Glazing with Ceramic Frit (insulate art work etc) LOUVRRES LH1 - Aluminium Louvre LO2 - Glass Louvre Ventilator METAL ME1 - Metal Panel Type 1 ME2 - Metal Panel Type 2 - Anodized Aluminium Panel (colour R10) MISCELLANEOUS M1 - Helped Net M2 - Exposed Steel	
RAILINGS RA1 - Glass Railing Privacy - 1500mm high RA2 - Galvanneal Steel Railing RA3 - Glass Railing Clear - 1500mm high ROOFS RO1 - Standing Seam Metal Roof RO2 - Standing Seam Perforated Metal Roof RO3 - Liquid Applied Waterproof Coating STONE ST1 - Natural Stone Rainscreen System ST2 - Rainscreen System using colour accent material ST3 - Stone Soffit / Return; part of the same system as ST1 ST4 - Glazed / Glass Tile Soffit; Part of the same system as ST2		WINDOWS W1 - Recessed W2 - Recessed + Fin W3 - Extruded W4 - Recessed + Jangle W5 - Flush	

0m 4m 8m 12m 16m 20m

SCALE 1:200

DIMENSIONS IN MILLIMETRES

LEVELS IN METRES

KEY PLAN

CLIENT

NCH
the new children's hospital

DESIGN BUILD EQUIP

BDP. O'Connell Mahon Architects

Blackhall Green
Blackhall St
Dublin 7
Ireland
T +353 (0) 474 0600
E oconnellmahon@bdp.com
www.bdp.com

9 Fitzwilliam Place
Dublin 2
Ireland
T +353 (0) 676 7408
E info@oconnellmahon.ie
www.oconnellmahon.ie

PROJECT TITLE
National Paediatric Hospital Project
new children's hospital

PROJECT NUMBER
2006304

DRAWN BY
BDP

SCALE
1:200 @
A0 H

DATE
Aug 2015

REVISION

DRAWING NO
NPH-A-BDP-PL-ZZ-00-3205